

NPM3 Polyclonal Antibody

Catalog number: 11960-1-AP

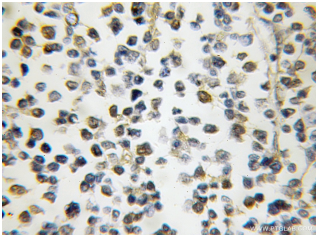
Size: 43 µg/150 µl

Source: Rabbit

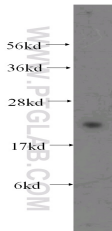
Isotype: IgG

Synonyms:

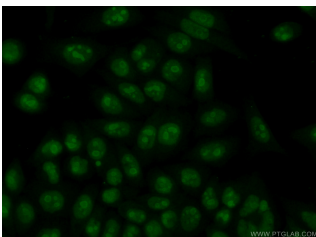
NPM3; NPM3,
nucleophosmin/nucleoplasmin,
3, Nucleoplasmin 3, PORMIN,
TMEM123



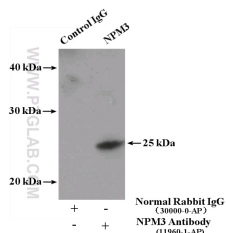
Immunohistochemical of paraffin-embedded human lymphoma using 11960-1-AP (NPM3 antibody) at dilution of 1:50 (under 10x lens)



HeLa cells were subjected to SDS PAGE followed by western blot with 11960-1-AP (NPM3 antibody) at dilution of 1:500



Immunofluorescent analysis of (10% Formaldehyde) fixed HeLa cells using 11960-1-AP (NPM3 Antibody) at dilution of 1:50 and Alexa Fluor 488-conjugated AffiniPure Goat Anti-Rabbit IgG(H+L)



Applications

Tested applications:	ELISA, WB, IHC, IF, IP
Species specificity:	Human, Mouse, Rat; other species not tested.
Calculated NPM3 MW:	178aa, 19 kDa
Observed NPM3 MW:	25 kDa
Positive WB detected in:	HeLa cells
Positive IP detected in:	HeLa cells
Positive IHC detected in:	Human lymphoma tissue
Positive IF detected in:	HeLa cells
Recommended dilution:	WB: 1:200-1:2000 IP: 1:200-1:2000 IHC: 1:20-1:200 IF: 1:20-1:200

Application key: WB = Western blotting, IHC = Immunohistochemistry, IF = Immunofluorescence, IP = Immunoprecipitation

Immunogen information

Immunogen:	Ag2564
GenBank accession number:	BC054868
Gene ID (NCBI):	10360
Full name:	Nucleophosmin/nucleoplasmin, 3

Product information

Purification method:	Antigen affinity purification
Storage:	PBS with 0.1% sodium azide and 50% glycerol pH 7.3. Store at -20°C.

IP Result of anti-NPM3
(IP:11960-1-AP, 4ug;
Detection:11960-1-AP 1:500)
with HeLa cells lysate 3400ug.