

## SLC25A10 Polyclonal Antibody

Catalog number: 12086-1-AP

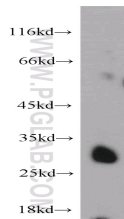
Size: 61 µg/150 µl

Source: Rabbit

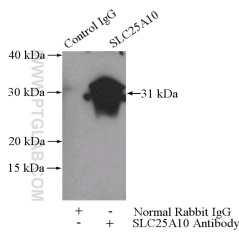
Isotype: IgG

Synonyms:

SLC25A10; DIC, SLC25A10



mouse liver tissue were subjected to SDS PAGE followed by western blot with 12086-1-AP(SLC25A10 antibody) at dilution of 1:500



IP Result of anti-SLC25A10 (IP:12086-1-AP, 3µg; Detection:12086-1-AP 1:500) with mouse liver tissue lysate 4000µg.

### Background

SLC25A10, also known as dicarboxylate ion carrier (DIC), is a mitochondrial inner membrane carrier protein which catalyzes the transport of dicarboxylates such as malate and succinate across the mitochondrial membrane in exchange for phosphate, sulfate, and thiosulfate. SLC25A10 is expressed at highest levels in kidney and liver, lower levels in lung, spleen, heart, and brain, and lowest levels in skeletal muscle. Two isoforms of SLC25A10 exist due to the alternative splicing.

### Applications

Tested applications:	ELISA, WB, IP
Species specificity:	Human, Mouse, Rat; other species not tested.
Calculated SLC25A10 MW:	296aa, 32 kDa
Observed SLC25A10 MW:	31 kDa
Positive WB detected in	Mouse liver tissue, mouse kidney tissue
Positive IP detected in	Mouse liver tissue
Recommended dilution:	WB: 1:200-1:2000 IP: 1:200-1:2000

Application key: WB = Western blotting, IHC = Immunohistochemistry, IF = Immunofluorescence, IP = Immunoprecipitation

### Immunogen information

Immunogen:	Ag2719
GenBank accession number:	BC015797
Gene ID (NCBI):	1468
Full name:	Solute carrier family 25 (mitochondrial carrier; dicarboxylate transporter), member 10

### Product information

Purification method:	Antigen affinity purification
Storage:	PBS with 0.02% sodium azide and 50% glycerol pH 7.3. Store at -20°C.