

MCHR1 Polyclonal Antibody

Catalog number: 11656-2-AP

Size: 22 µg/150 µl

Source: Rabbit

Isotype: IgG

Synonyms:

MCHR1; G protein coupled receptor 24, GPR24, MCH 1R, MCH R1, MCH receptor 1, MCH1R, MCHR, MCHR 1, MCHR1, SLC 1, SLC1

Applications

Tested applications:	ELISA, WB, IHC
Species specificity:	Human, Mouse, Rat; other species not tested.
Calculated MCHR1 MW:	422aa, 46 kDa
Observed MCHR1 MW:	46 kDa
Positive WB detected in:	SH-SY5Y cells
Positive IHC detected in:	Human heart tissue
Recommended dilution:	WB: 1:500-1:5000 IHC: 1:20-1:200

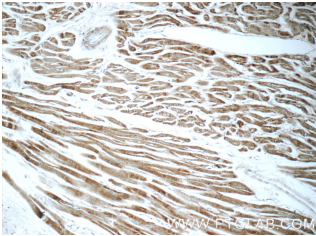
Application key: WB = Western blotting, IHC = Immunohistochemistry, IF = Immunofluorescence, IP = Immunoprecipitation

Immunogen information

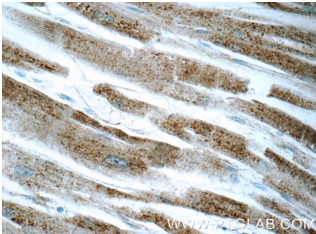
Immunogen:	Ag2224
GenBank accession number:	BC021146
Gene ID (NCBI):	2847
Full name:	Melanin-concentrating hormone receptor 1

Product information

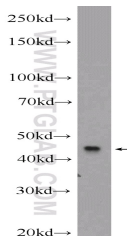
Purification method:	Antigen affinity purification
Storage:	PBS with 0.1% sodium azide and 50% glycerol pH 7.3. Store at -20°C.



Immunohistochemistry of paraffin-embedded human heart tissue slide using 11656-2-AP (MCHR1 Antibody) at dilution of 1:50 (under 10x lens)



Immunohistochemistry of paraffin-embedded human heart tissue slide using 11656-2-AP (MCHR1 Antibody) at dilution of 1:50 (under 40x lens)



SH-SY5Y cells were subjected to SDS PAGE followed by western blot with 11656-2-AP (MCHR1 Antibody) at dilution of 1:1000