

ADH6 Polyclonal Antibody

Catalog number: 13288-2-AP

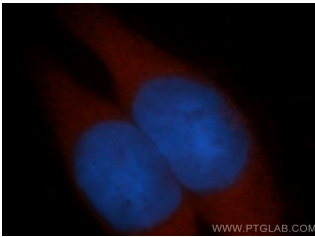
Size: 38 µg/150 µl

Source: Rabbit

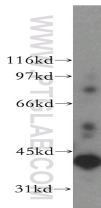
Isotype: IgG

Synonyms:

ADH6; ADH 5, ADH6, Alcohol dehydrogenase 6



Immunofluorescent analysis of MCF-7 cells, using ADH6 antibody 13288-2-AP at 1:50 dilution and Rhodamine-labeled goat anti-rabbit IgG (red). Blue pseudocolor = DAPI (fluorescent DNA dye).



human liver tissue were subjected to SDS PAGE followed by western blot with 13288-2-AP(ADH6 antibody) at dilution of 1:500

Applications

Tested applications:	ELISA, WB, IF
Species specificity:	Human; other species not tested.
Calculated ADH6 MW:	368aa,39kd
Observed ADH6 MW:	39kd
Positive WB detected in	Human liver tissue
Positive IF detected in	MCF-7 cells
Recommended dilution:	WB: 1:250 - 1:1000 IF: 1:25 - 1:100

Application key: WB = Western blotting, IHC = Immunohistochemistry, IF = Immunofluorescence, IP = Immunoprecipitation

Immunogen information

Immunogen:	Ag3984
GenBank accession number:	BC039065
Gene ID (NCBI):	130
Full name:	Alcohol dehydrogenase 6 (class V)

Product information

Purification method:	Antigen affinity purification
Storage:	PBS with 0.02% sodium azide and 50% glycerol pH 7.3. Store at -20°C.