

CREST Polyclonal Antibody

Catalog number: 12439-1-AP

Size: 39 µg/150 µl

Source: Rabbit

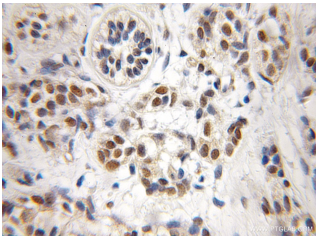
Isotype: IgG

Synonyms:

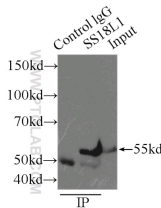
SS18L1; CREST, KIAA0693,

LP2261, SS18 like protein 1,

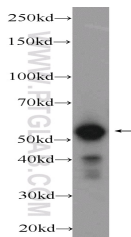
SS18L1, SYT homolog 1



Immunohistochemical of paraffin-embedded human breast cancer using 12439-1-AP (CREST antibody) at dilution of 1:50 (under 10x lens)



IP Result of anti-CREST (IP:12439-1-AP, 3µg; Detection:12439-1-AP 1:1000) with mouse brain tissue lysate 6000µg.



K-562 cells were subjected to SDS PAGE followed by western blot with 12439-1-AP (CREST Antibody) at dilution of 1:1000

Background

SS18-like 1 (SS18L1) is a transcriptional activator that is required for calcium-dependent dendritic growth and branching in cortical neurons. It's also a nuclear protein interacts with CREB-binding protein and expressed in the developing brain. It helps regulate neuronal morphogenesis in calcium-dependent manner. The N-terminal domain of SS18L1 is required for suppressing transactivation in the basal state, while the C-terminal domain is required for calcium-induced transactivation. It's part of the CREST-BRG1 complex, a multiprotein complex that regulates promoter activation by orchestrating a calcium-dependent release of a repressor complex and a recruitment of an activator complex. This complex also binds to the NR2B promoter, and activity-dependent induction of NR2B expression involves a release of HDAC1 and recruitment of CREBBP

Applications

Tested applications:	ELISA, IHC, IP, WB
Cited applications:	CoIP, IF, IHC, WB
Species specificity:	Human, Mouse, Rat; other species not tested.
Cited species:	Fly, human, mouse
Calculated CREST MW:	396aa, 43 kDa
Observed CREST MW:	55 kDa
Positive WB detected in	K-562 cells, COLO 320 cells, human heart tissue
Positive IP detected in	Mouse brain tissue
Positive IHC detected in	Human breast cancer tissue, human brain tissue
Recommended dilution:	WB: 1:500-1:5000
	IP: 1:500-1:5000
	IHC: 1:20-1:200

Application key: WB = Western blotting, IHC = Immunohistochemistry, IF = Immunofluorescence, IP = Immunoprecipitation

Immunogen information

Immunogen:	Ag3119
GenBank accession number:	BC034494
Gene ID (NCBI):	26039
Full name:	Synovial sarcoma translocation gene on chromosome 18-like 1

Product information

Purification method:	Antigen affinity purification
Storage:	PBS with 0.1% sodium azide and 50% glycerol pH 7.3. Store at -20°C.