

SULF2 Polyclonal Antibody

Catalog number: 12260-1-AP

Size: 39 µg/150 µl

Source: Rabbit

Isotype: IgG

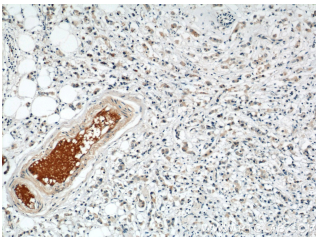
Synonyms:

SULF2; DKFZp313E091,

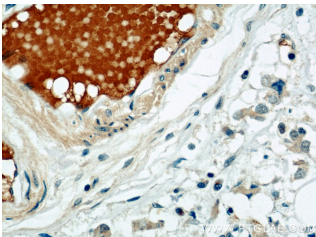
Extracellular sulfatase Sulf 2,

FLJ90554, HSULF 2, KIAA1247,

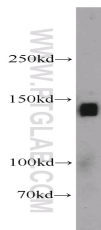
SULF2, sulfatase 2



Immunohistochemical of paraffin-embedded human breast cancer using 12260-1-AP(SULF2 antibody) at dilution of 1:50 (under 10x lens)



Immunohistochemical of paraffin-embedded human breast cancer using 12260-1-AP(SULF2 antibody) at dilution of 1:50 (under 40x lens)



mouse liver tissue were subjected to SDS PAGE followed by western blot with 12260-1-AP(SULF2 antibody) at dilution of 1:500

Background

SULF2, also named as KIAA1247, belongs to the sulfatase family. It exhibits arylsulfatase activity and highly specific endoglucosamine-6-sulfatase activity. SULF2 can remove sulfate from the C-6 position of glucosamine within specific subregions of intact heparin. SULF2 has several forms: the unglycosylated 100 kDa SULF2, the glycosylated 120-150 kDa SULF2, the cleaved 72-75 kDa and 50 kDa SULF2.

Applications

Tested applications:	ELISA, WB, IHC
Species specificity:	Human, Mouse, Rat; other species not tested.
Calculated SULF2 MW:	870aa.96 kDa
Observed SULF2 MW:	130-150 kDa
Positive WB detected in	Mouse liver tissue
Positive IHC detected in	Human breast cancer tissue, human ovary tissue
Recommended dilution:	WB: 1:200-1:2000 IHC: 1:20-1:200

Application key: WB = Western blotting, IHC = Immunohistochemistry, IF = Immunofluorescence, IP = Immunoprecipitation

Immunogen information

Immunogen:	Ag2915
GenBank accession number:	BC020962
Gene ID (NCBI):	55959
Full name:	Sulfatase 2

Product information

Purification method:	Antigen affinity purification
Storage:	PBS with 0.1% sodium azide and 50% glycerol pH 7.3. Store at -20°C.