

## Prothymosin alpha Polyclonal Antibody

Catalog number: 10480-1-AP

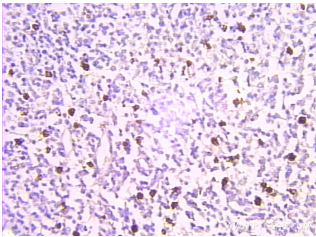
Size: 60 µg/150 µl

Source: Rabbit

Isotype: IgG

Synonyms:

PTMA; Prothymosin alpha,  
prothymosin, alpha, PTMA,  
TMSA



Immunohistochemical of paraffin-embedded human lymphoma using 10480-1-AP (PTMA antibody) at dilution of 1:100 (under 25x lens)

### Background

Prothymosin alpha (PTMA) is a nuclear protein possessing a number of cellular functions including cell survival. PTMA is identified to be localized in the nuclei of neurons, while it is found in both nuclei and cytoplasm in the astrocytes and microglia of adult brain. PTMA inhibits the neuronal necrosis induced by serum-free starvation or ischemia-reperfusion stress, which causes a rapid internalization of GLUT1/4, leading to a decrease in glucose uptake and cellular ATP levels. Extensive research on PTMA showed that it is of clinical significance and potential medical use as they may serve as a molecular marker for cancer prognosis and/or as therapeutic agents for treating immunodeficiencies, autoimmune diseases and malignancies.

### Applications

Tested applications:	ELISA, IHC
Species specificity:	Human; other species not tested.
Calculated Prothymosin alpha MW:	12 kDa
Observed Prothymosin alpha MW:	
Positive IHC detected in	Human lymphoma tissue
Recommended dilution:	IHC: 1:20-1:200

Application key: WB = Western blotting, IHC = Immunohistochemistry, IF = Immunofluorescence, IP = Immunoprecipitation

### Immunogen information

Immunogen:	Ag0732
GenBank accession number:	BC003510
Gene ID (NCBI):	5757
Full name:	Prothymosin, alpha

### Product information

Purification method:	Antigen affinity purification
Storage:	PBS with 0.1% sodium azide and 50% glycerol pH 7.3. Store at -20°C.