

## DCP1B Polyclonal Antibody

Catalog number: 13863-1-AP

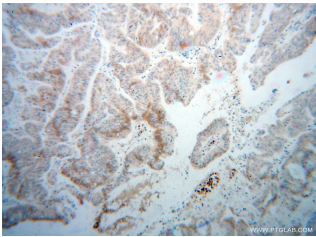
Size: 52 µg/150 µl

Source: Rabbit

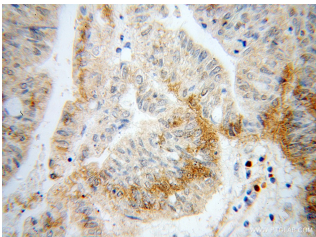
Isotype: IgG

Synonyms:

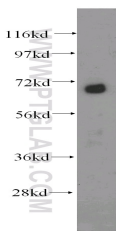
DCP1B; DCP1, DCP1B, hDcp1b,  
mRNA decapping enzyme 1B



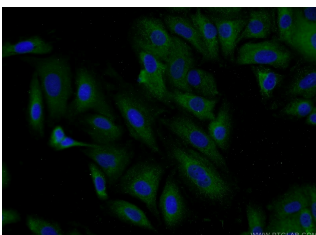
Immunohistochemical of paraffin-embedded human liver cancer using 13863-1-AP(DCP1B antibody) at dilution of 1:100 (under 10x lens)



Immunohistochemical of paraffin-embedded human liver cancer using 13863-1-AP(DCP1B antibody) at dilution of 1:100 (under 40x lens)



human liver tissue were subjected to SDS PAGE followed by western blot with 13863-1-AP(DCP1B antibody) at dilution of 1:500



Immunofluorescent analysis of A549 cells using 13863-1-AP ( DCP1B Antibody) at

### Applications

<b>Tested applications:</b>	ELISA, WB, IHC, IF, IP
<b>Species specificity:</b>	Human, Mouse, Rat; other species not tested.
<b>Calculated DCP1B MW:</b>	618aa,68 kDa
<b>Observed DCP1B MW:</b>	68 kDa
<b>Positive WB detected in</b>	Human liver tissue, A549 cells, HeLa cells, Jurkat cells, mouse liver tissue, rat spleen tissue
<b>Positive IP detected in</b>	HeLa cells
<b>Positive IHC detected in</b>	Human liver cancer tissue
<b>Positive IF detected in</b>	A549 cells
<b>Recommended dilution:</b>	WB: 1:500-1:5000 IP: 1:200-1:2000 IHC: 1:20-1:200 IF: 1:20-1:200

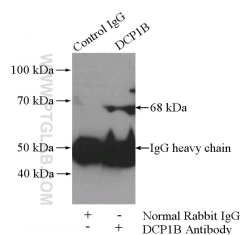
Application key: WB = Western blotting, IHC = Immunohistochemistry, IF = Immunofluorescence, IP = Immunoprecipitation

### Immunogen information

<b>Immunogen:</b>	Ag4845
<b>GenBank accession number:</b>	BC043437
<b>Gene ID (NCBI):</b>	196513
<b>Full name:</b>	DCP1 decapping enzyme homolog B (S. cerevisiae)

### Product information

<b>Purification method:</b>	Antigen affinity purification
<b>Storage:</b>	PBS with 0.02% sodium azide and 50% glycerol pH 7.3. Store at -20°C.



IP Result of anti-DCP1B  
(IP:13863-1-AP, 4µg;  
Detection:13863-1-AP 1:500)

dilution of 1:50 and Alexa Fluor 488-conjugated AffiniPure Goat Anti-Rabbit IgG(H+L) with HeLa cells lysate 1520ug.