

CPSF3 Polyclonal Antibody

Catalog number: 11609-1-AP

Size: 20 µg/150 µl

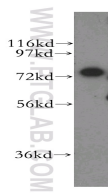
Source: Rabbit

Isotype: IgG

Synonyms:

CPSF3; CPSF; CPSF-73; CPSF73;

YSH1



HEK-293 cells were subjected to SDS PAGE followed by western blot with 11609-1-AP(CPSF3 Antibody) at dilution of 1:1000

Applications

Tested applications:	ELISA, WB
Species specificity:	Human, mouse, rat; other species not tested.
Positive WB detected in:	HEK-293 cells, HepG2 cells, human brain tissue, human skin tissue
Calculated CPSF3 MW:	684aa,77kd
Observed CPSF3 MW:	77kd
Recommended dilution:	WB: 1:500-1:5000

Application key: WB = Western blotting, IHC = Immunohistochemistry, IF = Immunofluorescence, IP = Immunoprecipitation, FC = Flow cytometry

Immunogen information

Immunogen:	Ag2173
GenBank accession number:	BC020211
Gene ID (NCBI):	51692
Full name:	Cleavage and polyadenylation specific factor 3, 73kDa

Product information

Purification method:	Antigen affinity purification
Storage:	PBS with 0.1% sodium azide and 50% glycerol pH 7.3. Store at -20°C.