

NTHL1 Polyclonal Antibody

Catalog number: 11154-1-AP

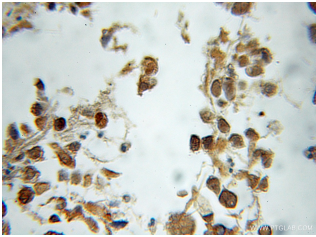
Size: 30 µg/150 µl

Source: Rabbit

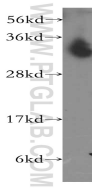
Isotype: IgG

Synonyms:

NTHL1; NTH1, NTHL1, OCTS3



Immunohistochemical of paraffin-embedded human gliomas using 11154-1-AP(NTHL1 antibody) at dilution of 1:50 (under 10x lens)



human brain tissue were subjected to SDS PAGE followed by western blot with 11154-1-AP(NTHL1 antibody) at dilution of 1:400

Background

NTHL1, also named as Endonuclease III-like protein 1 or OCTS3, is a 312 amino acid protein, which belongs to the Nth/MutY family. NTHL1 localizes in the nucleus and is widely expressed with highest levels in heart and lowest levels in lung and liver. NTHL1 Has both an apurinic and/or apyrimidinic endonuclease activity and a DNA N-glycosylase activity and incises damaged DNA at cytosines, thymines and guanines. NTHL1 acts on a damaged strand, 5' from the damaged site and is required for the repair of both oxidative DNA damage and spontaneous mutagenic lesions.

Applications

Tested applications:	ELISA, WB, IHC
Cited applications:	WB
Species specificity:	Human, Mouse, Rat; other species not tested.
Cited species:	Human
Calculated NTHL1 MW:	34.3 kDa
Observed NTHL1 MW:	34 kDa
Positive WB detected in	Human brain tissue
Positive IHC detected in	Human gliomas tissue
Recommended dilution:	WB: 1:200-1:1000 IHC: 1:20-1:200

Application key: WB = Western blotting, IHC = Immunohistochemistry, IF = Immunofluorescence, IP = Immunoprecipitation

Immunogen information

Immunogen:	Ag1631
GenBank accession number:	BC003014
Gene ID (NCBI):	4913
Full name:	Nth endonuclease III-like 1 (E. coli)

Product information

Purification method:	Antigen affinity purification
Storage:	PBS with 0.1% sodium azide and 50% glycerol pH 7.3. Store at -20°C.