

TIMM13 Polyclonal Antibody

Catalog number: 11973-1-AP

Size: 60 µg/150 µl

Source: Rabbit

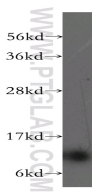
Isotype: IgG

Synonyms:

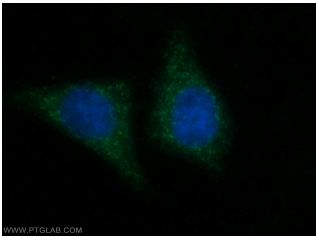
TIMM13; ppp1, TIM13,

TIM13B, TIMM13, TIMM13A,

TIMM13B



PC-3 cells were subjected to SDS PAGE followed by western blot with 11973-1-AP (TIMM13 antibody) at dilution of 1:300



Immunofluorescent analysis of HepG2 cells using 11973-1-AP (TIMM13 Antibody) at dilution of 1:50 and Alexa Fluor 488-conjugated AffiniPure Goat Anti-Rabbit IgG(H+L)

Background

TIMM13 gene, also known as TIM13, TIM13B, TIM M13A or TIMM13B, encodes mitochondrial import inner membrane translocase subunit Tim13 belonging to the small Tim family. TIM13 functions as mitochondrial intermembrane chaperone that participates in the import and insertion of some multi-pass transmembrane proteins into the mitochondrial inner membrane. Proteins of the intermembrane space (IMS) of mitochondria are typically synthesized without presequences. TIM13 contains four conserved cysteine residues that bind a zinc ion as cofactor. Import of TIM13 did not depend on the membrane potential or ATP hydrolysis. Upon import into mitochondria TIM13 adopted a stably folded conformation in the IMS.

Applications

Tested applications:	ELISA, WB, IF
Cited applications:	IF
Species specificity:	Human; other species not tested.
Cited species:	Human
Calculated TIMM13 MW:	95aa, 11 kDa
Observed TIMM13 MW:	11 kDa
Positive WB detected in:	PC-3 cells
Positive IF detected in:	HepG2 cells
Recommended dilution:	WB: 1:500-1:5000 IF: 1:20-1:200

Application key: WB = Western blotting, IHC = Immunohistochemistry, IF = Immunofluorescence, IP = Immunoprecipitation

Immunogen information

Immunogen:	Ag2596
GenBank accession number:	BC008607
Gene ID (NCBI):	26517
Full name:	Translocase of inner mitochondrial membrane 13 homolog (yeast)

Product information

Purification method:	Antigen affinity purification
Storage:	PBS with 0.1% sodium azide and 50% glycerol pH 7.3. Store at -20°C.