

RNase T2 Polyclonal Antibody

Catalog number: 13753-1-AP

Size: 20 µg/150 µl

Source: Rabbit

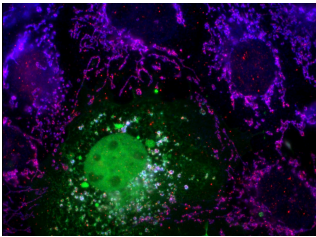
Isotype: IgG

Synonyms:

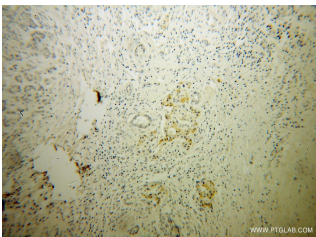
RNASET2; bA514O12.3,

Ribonuclease 6, Ribonuclease

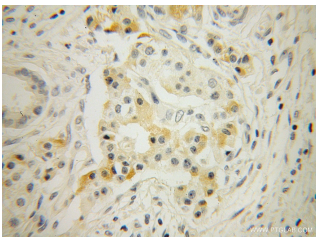
T2, RNASE6PL, RNASET2



IF result of 13753-1-AP (anti-RNASET2) in COS7 cell by Dr. Nancy Kedersha. COS7 cells transiently transfected with FAST-KD4-YFP, counterstained with PTG RNASET2 antibody (red) and human anti-mitochondrial antigen in blue. Note that FAST-KD4-YFP overexpression alters mitochondrial morphology, and is also present at stress granules (green only).



Immunohistochemical of paraffin-embedded human pancreas cancer using 13753-1-AP (RNASET2 antibody) at dilution of 1:100 (under 10x lens)



Immunohistochemical of paraffin-embedded human pancreas cancer using 13753-1-AP (RNASET2 antibody) at dilution of 1:100 (under 40x lens)

Background

RNASET2 (Ribonuclease T2) is also named as RNASE6PL (Ribonuclease 6) and belongs to the RNase T2 family. It is a unique member of the growing family of tumor-antagonizing genes and behaves as a class II tumor suppressor and abolishes the tumorigenic potential of an ovarian cancer-derived cell line. This protein has 2 isoforms produced by alternative splicing. Both mildly glycosylated (ranging from 38 to 45 kDa) and highly glycosylated forms (ranging from 50 to 80 kDa) of human tumor suppressor protein RNASET2 can be detected in immunoblotting in *P. pastoris* (PMID: 21446958).

Applications

Tested applications:	ELISA, IHC, IF, WB, IP
Species specificity:	Human, Mouse; other species not tested.
Calculated RNase T2 MW:	256aa, 29 kDa
Observed RNase T2 MW:	29 kDa
Positive WB detected in	HEK-293 cells, mouse pancreas tissue
Positive IP detected in	BxPC-3 cells
Positive IHC detected in	Human pancreas cancer tissue
Positive IF detected in	Transfected cells
Recommended dilution:	WB: 1:200-1:2000
	IP: 1:200-1:1000
	IHC: 1:20-1:200
	IF: 1:20-1:200

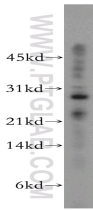
Application key: WB = Western blotting, IHC = Immunohistochemistry, IF = Immunofluorescence, IP = Immunoprecipitation

Immunogen information

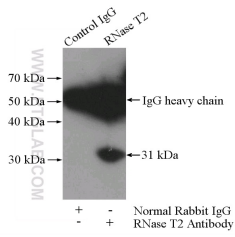
Immunogen:	Ag4695
GenBank accession number:	BC039713
Gene ID (NCBI):	8635
Full name:	Ribonuclease T2

Product information

Purification method:	Antigen affinity purification
Storage:	PBS with 0.02% sodium azide and 50% glycerol pH 7.3. Store at -20°C.



HEK-293 cells were subjected to SDS PAGE followed by western blot with 13753-1-AP(RNASET2 antibody) at dilution of 1:500



IP Result of anti-RNASET2 (IP:13753-1-AP, 4ug; Detection:13753-1-AP 1:300) with BxPC-3 cells lysate 4000ug.