

LSM4 Polyclonal Antibody

Catalog number: 10834-1-AP

Size: 44 µg/150 µl

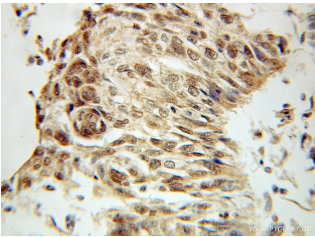
Source: Rabbit

Isotype: IgG

Synonyms:

LSM4; Glycine rich protein,

GRP, LSM4, YER112W



Immunohistochemical of paraffin-embedded human lung cancer using 10834-1-AP (LSM4 antibody) at dilution of 1:100 (under 10x lens)



MCF7 cells were subjected to SDS PAGE followed by western blot with 10834-1-AP (LSM4 antibody) at dilution of 1:800

Background

Sm-like proteins, such as LSM4, were identified in a variety of organisms based on sequence homology with the Sm protein family. Sm-like proteins contain the Sm sequence motif, which consists of 2 regions separated by a linker of variable length that folds as a loop. Sm-like proteins are thought to form a stable heteromer present in tri-snRNP particles, which are important for pre-mRNA splicing

Applications

Tested applications:	ELISA, WB, IHC
Cited applications:	WB
Species specificity:	Human, Mouse, Rat; other species not tested.
Cited species:	Human
Calculated LSM4 MW:	15 kDa
Observed LSM4 MW:	15 kDa
Positive WB detected in	MCF7 cells, human placenta tissue, MDA-MB-231 cells
Positive IHC detected in	Human lung cancer tissue
Recommended dilution:	WB: 1:200-1:2000 IHC: 1:20-1:200

Application key: WB = Western blotting, IHC = Immunohistochemistry, IF = Immunofluorescence, IP = Immunoprecipitation

Immunogen information

Immunogen:	Ag1280
GenBank accession number:	BC022198
Gene ID (NCBI):	25804
Full name:	LSM4 homolog, U6 small nuclear RNA associated (S. cerevisiae)

Product information

Purification method:	Antigen affinity purification
Storage:	PBS with 0.1% sodium azide and 50% glycerol pH 7.3. Store at -20°C.