

MTHFD2 Polyclonal Antibody

Catalog number: 12270-1-AP

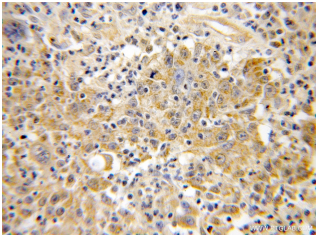
Size: 32 µg/150 µl

Source: Rabbit

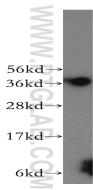
Isotype: IgG

Synonyms:

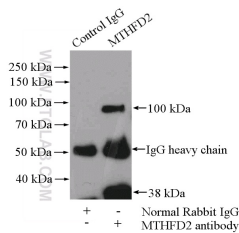
MTHFD2; MTHFD2



Immunohistochemical of paraffin-embedded human colon cancer using 12270-1-AP(MTHFD2 antibody) at dilution of 1:50 (under 10x lens)



Jurkat cells were subjected to SDS PAGE followed by western blot with 12270-1-AP(MTHFD2 antibody) at dilution of 1:300



IP Result of anti-MTHFD2 (IP:12270-1-AP, 4µg; Detection:12270-1-AP 1:300) with mouse testis tissue lysate 4000µg.

Applications

Tested applications:	ELISA, WB, IHC, IP
Cited applications:	WB
Species specificity:	Human, Mouse, Rat; other species not tested.
Cited species:	Human
Calculated MTHFD2 MW:	350aa, 38 kDa
Observed MTHFD2 MW:	38 kDa
Positive WB detected in	Jurkat cells, mouse testis tissue
Positive IP detected in	Mouse testis tissue
Positive IHC detected in	Human colon cancer tissue
Recommended dilution:	WB: 1:500-1:5000
	IP: 1:200-1:1000
	IHC: 1:20-1:200

Application key: WB = Western blotting, IHC = Immunohistochemistry, IF = Immunofluorescence, IP = Immunoprecipitation

Immunogen information

Immunogen:	Ag2911
GenBank accession number:	BC017054
Gene ID (NCBI):	10797
Full name:	Methylenetetrahydrofolate dehydrogenase (NADP+ dependent) 2, methenyltetrahydrofolate cyclohydrolase

Product information

Purification method:	Antigen affinity purification
Storage:	PBS with 0.1% sodium azide and 50% glycerol pH 7.3. Store at -20°C.