

SYCE1 Polyclonal Antibody

Catalog number: 11063-1-AP

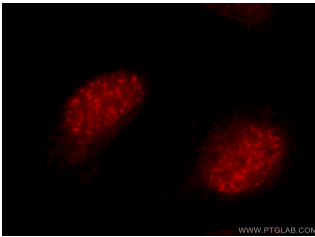
Size: 60 µg/150 µl

Source: Rabbit

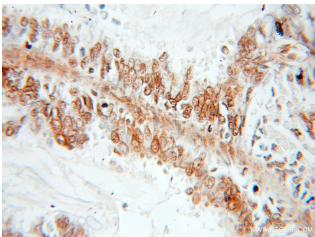
Isotype: IgG

Synonyms:

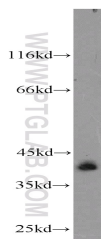
SYCE1; C10orf94, Cancer/testis antigen 76, CT76, SYCE1



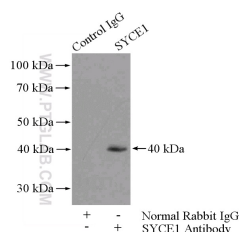
Immunofluorescent analysis of HepG2 cells using 11063-1-AP (SYCE1 Antibody) at dilution of 1:25 and Rhodamine-Goat anti-Rabbit IgG



Immunohistochemical of paraffin-embedded human ovary tumor using 11063-1-AP (SYCE1 antibody) at dilution of 1:50 (under 10x lens)



mouse testis tissue were subjected to SDS PAGE followed by western blot with 11063-1-AP (SYCE1 antibody) at dilution of 1:1000



IP Result of anti-SYCE1

(IP:11063-1-AP, 4µg;

Detection:11063-1-AP 1:800)

Applications

Tested applications:	ELISA, IHC, WB, IF, IP
Species specificity:	Human, Mouse, Rat; other species not tested.
Calculated SYCE1 MW:	315aa,36 kDa
Observed SYCE1 MW:	40-44 kDa
Positive WB detected in	Mouse testis tissue
Positive IP detected in	Mouse testis tissue
Positive IHC detected in	Human ovary tumor tissue
Positive IF detected in	HepG2 cells
Recommended dilution:	WB: 1:500-1:5000
	IP: 1:200-1:2000
	IHC: 1:20-1:200
	IF: 1:10-1:100

Application key: WB = Western blotting, IHC = Immunohistochemistry, IF = Immunofluorescence, IP = Immunoprecipitation

Immunogen information

Immunogen:	Ag1527
GenBank accession number:	BC034821
Gene ID (NCBI):	93426
Full name:	Synaptonemal complex central element protein 1

Product information

Purification method:	Antigen affinity purification
Storage:	PBS with 0.1% sodium azide and 50% glycerol pH 7.3. Store at -20°C.

with mouse testis tissue lysate
4800ug.