

TCP1 Polyclonal Antibody

Catalog number: 10320-1-AP

Size: 37 µg/150 µl

Source: Rabbit

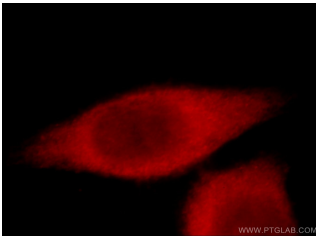
Isotype: IgG

Synonyms:

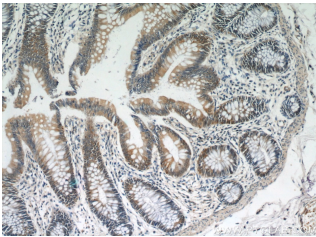
TCP1; CCT alpha, CCT1, CCTa,

D6S230E, t complex 1, TCP 1

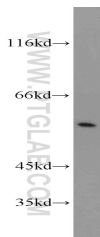
alpha, TCP1



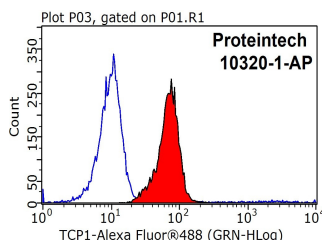
Immunofluorescent analysis of HeLa cells, using TCP1 antibody 10320-1-AP at 1:25 dilution and Rhodamine-labeled goat anti-rabbit IgG (red).



Immunohistochemical of paraffin-embedded human colon using 10320-1-AP (TCP1 antibody) at dilution of 1:50 (under 10x lens)



MCF7 cells were subjected to SDS PAGE followed by western blot with 10320-1-AP (TCP1 antibody) at dilution of 1:1000



1X10⁶ HeLa cells were stained with 0.2µg TCP1

Applications

Tested applications:	ELISA, WB, IF, IHC, FC, IP
Cited applications:	WB
Species specificity:	Human, Mouse; other species not tested.
Cited species:	Mouse
Calculated TCP1 MW:	60 kDa
Observed TCP1 MW:	55-60 kDa
Positive WB detected in	MCF7 cells, HeLa cells, Jurkat cells, mouse heart tissue
Positive IP detected in	HeLa cells
Positive IHC detected in	Human colon tissue, human colon cancer tissue, human liver cancer tissue
Positive IF detected in	Hela cells, MCF-7 cells
Positive FC detected in	HeLa cells
Recommended dilution:	WB: 1:500-1:5000 IP: 1:200-1:1000 IHC: 1:20-1:200 IF: 1:10-1:100 FC: N/A

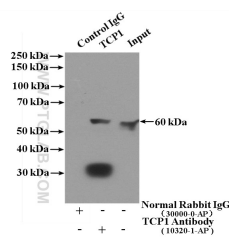
Application key: WB = Western blotting, IHC = Immunohistochemistry, IF = Immunofluorescence, IP = Immunoprecipitation

Immunogen information

Immunogen:	Ag0389
GenBank accession number:	BC000665
Gene ID (NCBI):	6950
Full name:	T-complex 1

Product information

Purification method:	Antigen affinity purification
Storage:	PBS with 0.02% sodium azide and 50% glycerol pH 7.3. Store at -20°C.



IP Result of anti-TCP1 (IP:10320-1-AP, 4µg)

antibody (10320-1-AP, red) Detection:10320-1-AP 1:300)
and control antibody (blue). with HeLa cells lysate 1600ug.
Fixed with 90% MeOH
blocked with 3% BSA (30
min). Alexa Fluor 488-
conjugated AffiniPure Goat
Anti-Rabbit IgG(H+L) with
dilution 1:1000.