

## GKAP1 Polyclonal Antibody

Catalog number: 11395-1-AP

Size: 68 µg/150 µl

Source: Rabbit

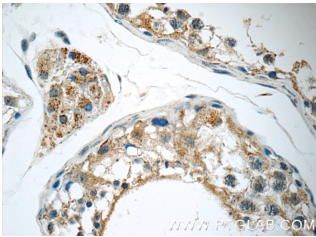
Isotype: IgG

Synonyms:

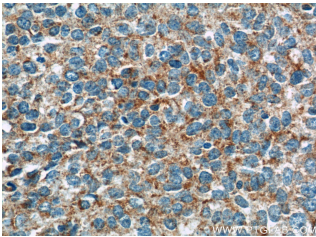
GKAP1; FKS G21, FLJ25469, G

kinase anchoring protein 1,

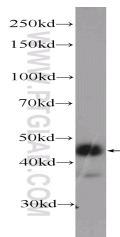
GKAP1, GKAP42



Immunohistochemistry of paraffin-embedded human testis tissue slide using 11395-1-AP (GKAP1 Antibody) at dilution of 1:50 (under 40x lens)



Immunohistochemistry of paraffin-embedded human cervical cancer tissue slide using 11395-1-AP (GKAP1 Antibody) at dilution of 1:50 (under 40x lens)



HEK-293 cells were subjected to SDS PAGE followed by western blot with 11395-1-AP (GKAP1 Antibody) at dilution of 1:600

### Background

GKAP1, or GKAP42, is a novel male germ cell-specific 42-kDa protein isolated by Yuasa K et al. GKAP42 mRNA is specifically expressed in testis, where it is restricted to the spermatocytes and early round spermatids.

### Applications

Tested applications:	ELISA, IHC, WB
Species specificity:	Human, Mouse, Rat; other species not tested.
Calculated GKAP1 MW:	366aa, 42 kDa
Observed GKAP1 MW:	45-50 kDa
Positive WB detected in	HEK-293 cells, MDA-MB-453s cells, mouse testis tissue
Positive IHC detected in	Human cervical cancer tissue, human testis tissue
Recommended dilution:	WB: 1:200-1:2000 IHC: 1:20-1:200

Application key: WB = Western blotting, IHC = Immunohistochemistry, IF = Immunofluorescence, IP = Immunoprecipitation

### Immunogen information

Immunogen:	Ag1914
GenBank accession number:	BC014476
Gene ID (NCBI):	80318
Full name:	G kinase anchoring protein 1

### Product information

Purification method:	Antigen affinity purification
Storage:	PBS with 0.1% sodium azide and 50% glycerol pH 7.3. Store at -20°C.