

NR2E3 Polyclonal Antibody

Catalog number: 14246-1-AP

Size: 23 µg/150 µl

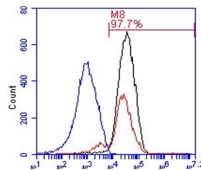
Source: Rabbit

Isotype: IgG

Synonyms:

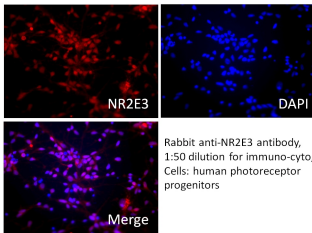
NR2E3; ESCS, NR2E3, PNR, rd7,

RNR, RP37



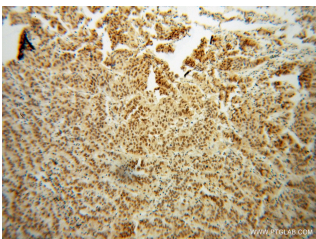
Rabbit anti-NR2E3 antibody, 1:100 dilution for FACS,
Cells: human photoreceptor progenitors,
Blue, isotype control; Black=passage 2; Red=passage 4.

FC result of NR2E3 antibody (14246-1-AP, 1:100) with human photoreceptor progenitor cells.
Blue, isotype control; Black=passage 2; Red=passage 4.

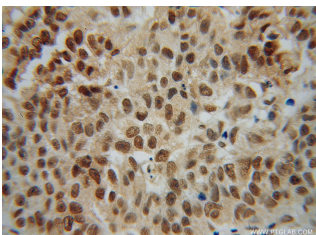


Rabbit anti-NR2E3 antibody,
1:50 dilution for immuno-cyto,
Cells: human photoreceptor
progenitors

IF result of NR2E3 antibody (14246-1-AP, 1:50) with human photoreceptor progenitor cells.



Immunohistochemical of paraffin-embedded human prostate cancer using 14246-1-AP (NR2E3 antibody) at dilution of 1:100 (under 10x lens)



Immunohistochemical of paraffin-embedded human prostate cancer using 14246-

Background

NR2E3, also known as PNR, encodes a retinal nuclear receptor that is a ligand-dependent transcription factor. This protein is part of a large family of nuclear receptor transcription factors involved in signaling pathways. NR2E3 influences the development of photoreceptors and their differentiation into rod and cone types, and acts as a transcriptional factor that is an activator of rod development and repressor of cone development [PMID:20725840]. It binds the promoter region of a number of rod- and cone-specific genes, including rhodopsin, M- and S-opsin and rod-specific phosphodiesterase beta subunit. [PMID:15689355]

Applications

Tested applications:	ELISA, WB, IHC, IF, FC
Cited applications:	IHC, WB
Species specificity:	Human, Mouse, Rat; other species not tested.
Cited species:	Mouse
Calculated NR2E3 MW:	45 kDa
Observed NR2E3 MW:	43-45 kDa
Positive WB detected in	Y79 cells, HepG2 cells, mouse eye tissue
Positive IHC detected in	Human prostate cancer tissue
Positive IF detected in	Photoreceptor progenitor cells
Positive FC detected in	Photoreceptor progenitor cells
Recommended dilution:	WB: 1:500-1:5000 IHC: 1:20-1:200 IF: N/A FC: N/A

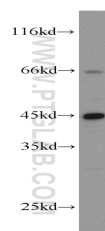
Application key: WB = Western blotting, IHC = Immunohistochemistry, IF = Immunofluorescence, IP = Immunoprecipitation

Immunogen information

Immunogen:	Ag5503
GenBank accession number:	BC041421
Gene ID (NCBI):	10002
Full name:	Nuclear receptor subfamily 2, group E, member 3

Product information

Purification method:	Antigen affinity purification
Storage:	PBS with 0.02% sodium azide and 50% glycerol pH 7.3. Store at -20°C.



Y79 cells were subjected to SDS PAGE followed by western blot with 14246-1-

**1-AP(NR2E3 antibody) at
dilution of 1:100 (under 40x
lens)**

**AP(NR2E3 antibody) at
dilution of 1:1000**