

WBP2 Polyclonal Antibody

Catalog number: 12030-1-AP

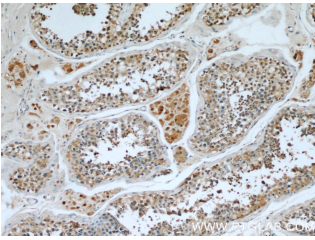
Size: 69 µg/150 µl

Source: Rabbit

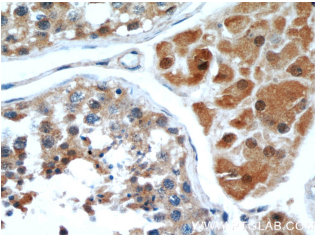
Isotype: IgG

Synonyms:

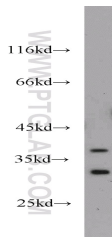
WBP2; WBP 2, WBP2, WW domain binding protein 2



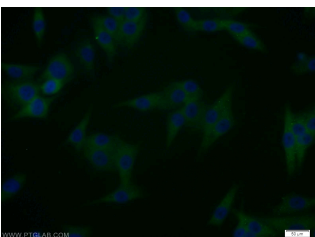
Immunohistochemical of paraffin-embedded human testis using 12030-1-AP(WBP2 antibody) at dilution of 1:50 (under 10x lens)



Immunohistochemical of paraffin-embedded human testis using 12030-1-AP(WBP2 antibody) at dilution of 1:50 (under 40x lens)



mouse brain tissue were subjected to SDS PAGE followed by western blot with 12030-1-AP(WBP2 antibody) at dilution of 1:1000



Immunofluorescent analysis of A375 cells using 12030-1-AP(WBP2 Antibody) at

Applications

Tested applications:	ELISA, WB, IHC, IF
Species specificity:	Human,Mouse,Rat; other species not tested.
Calculated WBP2 MW:	261aa,28 kDa
Observed WBP2 MW:	30-40 kDa
Positive WB detected in	Mouse brain tissue, A375 cells
Positive IHC detected in	Human testis tissue, human gliomas tissue
Positive IF detected in	A375 cells
Recommended dilution:	WB: 1:500-1:5000
	IHC: 1:20-1:200
	IF: 1:10-1:100

Application key: WB = Western blotting, IHC = Immunohistochemistry, IF = Immunofluorescence, IP = Immunoprecipitation

Immunogen information

Immunogen:	Ag2661
GenBank accession number:	BC010616
Gene ID (NCBI):	23558
Full name:	WW domain binding protein 2

Product information

Purification method:	Antigen affinity purification
Storage:	PBS with 0.1% sodium azide and 50% glycerol pH 7.3. Store at -20°C.

dilution of 1:25 and Alexa
Fluor 488-conjugated
AffiniPure Goat Anti-Rabbit
IgG(H+L)