

SNAPIN Polyclonal Antibody

Catalog number: 10055-1-AP

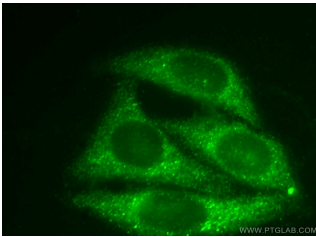
Size: 53 µg/150 µl

Source: Rabbit

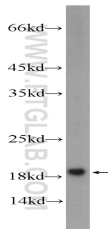
Isotype: IgG

Synonyms:

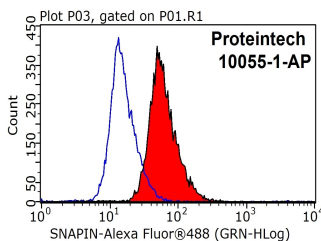
SNAPIN; SNAP associated protein, SNAP25BP, SNAPAP, SNAPIN



Immunofluorescent analysis of HepG2 cells, using SNAPIN antibody 10055-1-AP at 1:50 dilution and FITC-labeled donkey anti-rabbit IgG (green).



rat brain tissue were subjected to SDS PAGE followed by western blot with 10055-1-AP (SNAPIN Antibody) at dilution of 1:200



1X10⁶ HepG2 cells were stained with 0.2ug SNAPIN antibody (10055-1-AP, red) and control antibody (blue). Fixed with 90% MeOH blocked with 3% BSA (30 min). Alexa Fluor 488-conjugated AffiniPure Goat Anti-Rabbit IgG(H+L) with dilution 1:1000.

Background

Snapin, a protein of relative molecular weight of 15kd, is implicated in neurotransmission by binding to SNAP-25. Snapin was enriched in neurons and exclusively located on synaptic vesicle membrane, which may be a PKA target for modulating transmitter release through the cAMP-dependent signal-transduction pathway. This antibody can recognize the 15-18kd(Monomer) and 30-36kd(Dimer) forms of SNAPIN.

Applications

| | |
|--------------------------|--|
| Tested applications: | ELISA, IF, WB, IHC, FC, IP |
| Cited applications: | IHC, WB |
| Species specificity: | Human, Mouse, Rat; other species not tested. |
| Cited species: | Human, mouse |
| Calculated SNAPIN MW: | 15 kDa |
| Observed SNAPIN MW: | 15-18 kDa |
| Positive WB detected in | Rat brain tissue, A375 cells, HEK-293 cells, mouse brain tissue |
| Positive IP detected in | Mouse brain tissue |
| Positive IHC detected in | Human brain tissue, human testis tissue |
| Positive IF detected in | HepG2 cells |
| Positive FC detected in | HepG2 cells |
| Recommended dilution: | WB: 1:200-1:1000 IP: 1:200-1:1000 IHC: 1:20-1:200 IF: 1:20-1:200 FC: N/A |

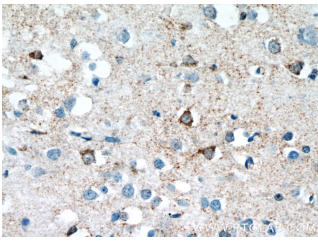
Application key: WB = Western blotting, IHC = Immunohistochemistry, IF = Immunofluorescence, IP = Immunoprecipitation

Immunogen information

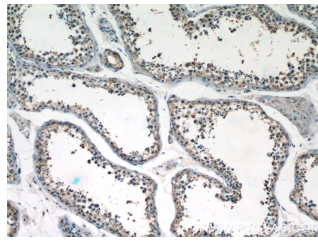
| | |
|---------------------------|-------------------------|
| Immunogen: | Ag0101 |
| GenBank accession number: | BC000761 |
| Gene ID (NCBI): | 23557 |
| Full name: | SNAP-associated protein |

Product information

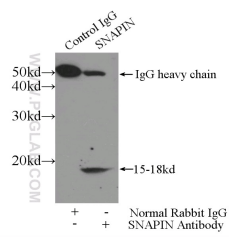
| | |
|----------------------|---|
| Purification method: | Antigen affinity purification |
| Storage: | PBS with 0.1% sodium azide and 50% glycerol pH 7.3. Store at -20°C. |



Immunohistochemistry of paraffin-embedded human brain tissue slide using 10055-1-AP (SNAPIN Antibody) at dilution of 1:50 (under 40x lens)



Immunohistochemistry of paraffin-embedded human testis tissue slide using 10055-1-AP (SNAPIN Antibody) at dilution of 1:50 (under 10x lens)



IP Result of anti-SNAPIN (IP:10055-1-AP, 5ug; Detection:10055-1-AP 1:300) with mouse brain tissue lysate 4000ug.