

CSHL1 Polyclonal Antibody

Catalog number: 11883-1-AP

Size: 20 µg/150 µl

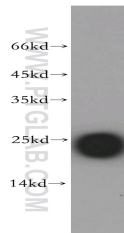
Source: Rabbit

Isotype: IgG

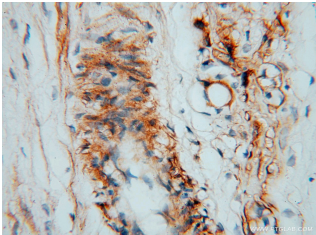
Synonyms:

CSHL1; CS-5; CSHP1; CSL;

MGC149868; hCS-L



human placenta tissue were subjected to SDS PAGE followed by western blot with 11883-1-AP(CSHL1 Antibody) at dilution of 1:2500



Immunohistochemistry of paraffin-embedded human placenta using 11883-1-AP(CSHL1 Antibody) at Dilution 1:100 (under 40x lens)

Applications

Tested applications:	ELISA, WB, IHC
Species specificity:	Human; other species not tested.
Positive WB detected in:	Human placenta tissue
Calculated CSHL1 MW:	199aa,23kd
Observed CSHL1 MW:	23kd
Positive IHC detected in:	Human placenta
Recommended dilution:	WB: 1:1000-1:10000 IHC: 1:50-1:200

Application key: WB = Western blotting, IHC = Immunohistochemistry, IF = Immunofluorescence, IP = Immunoprecipitation, FC = Flow cytometry

Immunogen information

Immunogen:	Ag2487
GenBank accession number:	BC029365
Gene ID (NCBI):	1444
Full name:	Chorionic somatomammotropin hormone-like 1

Product information

Purification method:	Antigen affinity purification
Storage:	PBS with 0.1% sodium azide and 50% glycerol pH 7.3. Store at -20°C.