

## PSG1 Polyclonal Antibody

Catalog number: 11809-1-AP

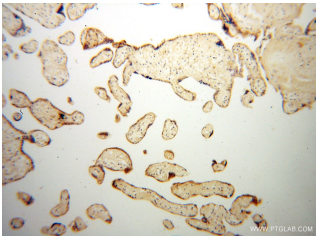
Size: 20 µg/150 µl

Source: Rabbit

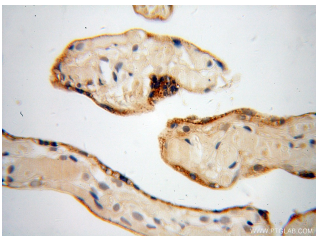
Isotype: IgG

Synonyms:

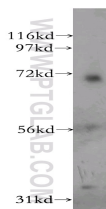
PSG1; B1G1, CD66f, DHFRP2,  
FL NCA 1/2, FLJ90598,  
FLJ90654, PBG1, PS beta C/D,  
PS beta G 1, PSBG 1, PSBG1,  
PSG1, PSG95, PSGGA, PSGIIA,  
SP1



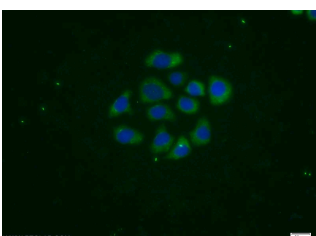
Immunohistochemical of paraffin-embedded human placenta using 11809-1-AP(PSG1 antibody) at dilution of 1:50 (under 10x lens)



Immunohistochemical of paraffin-embedded human placenta using 11809-1-AP(PSG1 antibody) at dilution of 1:50 (under 40x lens)



human kidney tissue were subjected to SDS PAGE followed by western blot with 11809-1-AP(PSG1 antibody) at dilution of 1:500



### Applications

Tested applications:	ELISA, WB, IHC, IF
Cited applications:	IF
Species specificity:	Human; other species not tested.
Cited species:	Human
Calculated PSG1 MW:	426aa,48 kDa
Observed PSG1 MW:	72kd,36kd
Positive WB detected in	Human kidney tissue, MCF7 cells
Positive IHC detected in	Human placenta tissue
Positive IF detected in	MCF-7 cells
Recommended dilution:	WB: 1:500-1:5000 IHC: 1:20-1:200 IF: 1:10-1:100

Application key: WB = Western blotting, IHC = Immunohistochemistry, IF = Immunofluorescence, IP = Immunoprecipitation

### Immunogen information

Immunogen:	Ag2468
GenBank accession number:	BC022338
Gene ID (NCBI):	5669
Full name:	Pregnancy specific beta-1-glycoprotein 1

### Product information

Purification method:	Antigen affinity purification
Storage:	PBS with 0.1% sodium azide and 50% glycerol pH 7.3. Store at -20°C.

**Immunofluorescent analysis  
of MCF-7 cells using 11809-1-  
AP( PSG1 Antibody) at  
dilution of 1:25 and Alexa  
Fluor 488-conjugated  
AffiniPure Goat Anti-Rabbit  
IgG(H+L)**