

RAB37 Polyclonal Antibody

Catalog number: 13051-1-AP

Size: 28 µg/150 µl

Source: Rabbit

Isotype: IgG

Synonyms:

RAB37; FLJ30284, FLJ32507,

RAB37, Ras related protein Rab

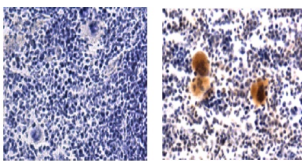
37

Applications

Tested applications:	ELISA, WB, IHC, IP
Species specificity:	Human, Mouse, Rat; other species not tested.
Calculated RAB37 MW:	223aa, 25 kDa
Observed RAB37 MW:	34 kDa, 25 kDa
Positive WB detected in	Sp2/0 cells
Positive IP detected in	Sp2/0 cells
Positive IHC detected in	Mouse spleen tissue
Recommended dilution:	WB: 1:200-1:1000
	IP: 1:200-1:1000
	IHC: 1:20-1:200

Application key: WB = Western blotting, IHC = Immunohistochemistry, IF = Immunofluorescence, IP = Immunoprecipitation

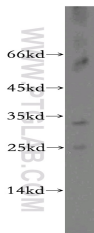
IHC result of 13051-1-AP in Mouse Spleen



Control/No Primary antibody

13051-1-AP 1:1000

IHC result from Barry Bradford of 13051-1-AP (1:1,000) in Mouse Spleen.



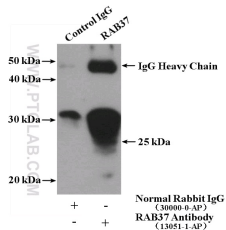
Immunogen information

Immunogen:	Ag3717
GenBank accession number:	BC016615
Gene ID (NCBI):	326624
Full name:	RAB37, member RAS oncogene family

Product information

Purification method:	Antigen affinity purification
Storage:	PBS with 0.02% sodium azide and 50% glycerol pH 7.3. Store at -20°C.

Sp2/0 cells were subjected to SDS PAGE followed by western blot with 13051-1-AP (RAB37 antibody) at dilution of 1:100



IP Result of anti-RAB37 (IP:13051-1-AP, 4µg; Detection:13051-1-AP 1:300) with Sp2/0 cells lysate 2400µg.