

PPIH Polyclonal Antibody

Catalog number: 11651-1-AP

Size: 20 µg/150 µl

Source: Rabbit

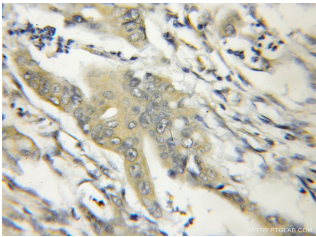
Isotype: IgG

Synonyms:

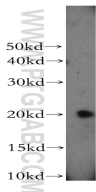
PPIH; CYP 20, CYP20, CYPH,

PPIase H, PPIH, Rotamase H,

SnuCyp 20, USA CYP



Immunohistochemical of paraffin-embedded human colon cancer using 11651-1-AP(PPIH antibody) at dilution of 1:50 (under 10x lens)



PC-3 cells were subjected to SDS PAGE followed by western blot with 11651-1-AP(PPIH antibody) at dilution of 1:200

Background

PPIH(Peptidyl-prolyl cis-trans isomerase H) is also named as CYP20, CYPH and belongs to cyclophilin-type PPIase family, PPIase H subfamily. It catalyzes the cis-trans isomerization of proline imidic peptide bonds in oligopeptides and may act as a chaperone(PMID:12875835).

Applications

Tested applications:	ELISA, WB, IHC
Species specificity:	Human, Mouse, Rat; other species not tested.
Calculated PPIH MW:	19kd
Observed PPIH MW:	20kd
Positive WB detected in	PC-3 cells, human colon tissue
Positive IHC detected in	Human colon cancer tissue
Recommended dilution:	WB: 1:200-1:2000 IHC: 1:20-1:200

Application key: WB = Western blotting, IHC = Immunohistochemistry, IF = Immunofluorescence, IP = Immunoprecipitation

Immunogen information

Immunogen:	Ag2253
GenBank accession number:	BC003412
Gene ID (NCBI):	10465
Full name:	Peptidylprolyl isomerase H (cyclophilin H)

Product information

Purification method:	Antigen affinity purification
Storage:	PBS with 0.1% sodium azide and 50% glycerol pH 7.3. Store at -20°C.