

## CDC26 Polyclonal Antibody

Catalog number: 14125-1-AP

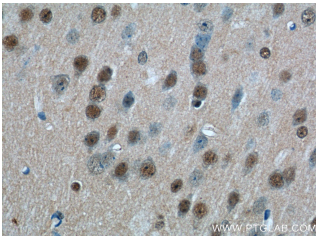
Size: 87 µg/150 µl

Source: Rabbit

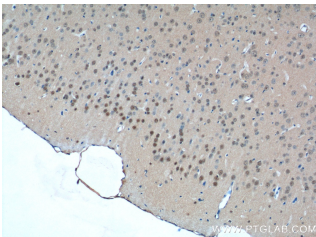
Isotype: IgG

Synonyms:

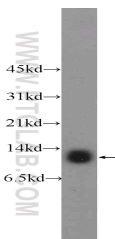
CDC26; ANAPC12, APC12,  
C9orf17, CDC26



Immunohistochemistry of paraffin-embedded mouse brain tissue slide using 14125-1-AP (CDC26 Antibody) at dilution of 1:50 (under 40x lens)



Immunohistochemistry of paraffin-embedded mouse brain tissue slide using 14125-1-AP (CDC26 Antibody) at dilution of 1:50 (under 10x lens)



HeLa cells were subjected to SDS PAGE followed by western blot with 14125-1-AP (CDC26 Antibody) at dilution of 1:300

### Background

CDC26, also named as ANAPC12, APC12 and C9orf17, is a component of the anaphase promoting complex/cyclosome (APC/C).

### Applications

Tested applications:	ELISA, WB, IHC
Species specificity:	Human, Mouse, Rat; other species not tested.
Calculated CDC26 MW:	10 kDaa
Observed CDC26 MW:	10 kDa
Positive WB detected in:	HeLa cells
Positive IHC detected in:	Mouse brain tissue
Recommended dilution:	WB: 1:200-1:1000 IHC: 1:20-1:200

Application key: WB = Western blotting, IHC = Immunohistochemistry, IF = Immunofluorescence, IP = Immunoprecipitation

### Immunogen information

Immunogen:	Ag5276
GenBank accession number:	BC066300
Gene ID (NCBI):	246184
Full name:	Cell division cycle 26 homolog (S. cerevisiae)

### Product information

Purification method:	Antigen affinity purification
Storage:	PBS with 0.1% sodium azide and 50% glycerol pH 7.3. Store at -20°C.