

PEPD Polyclonal Antibody

Catalog number: 12218-1-AP

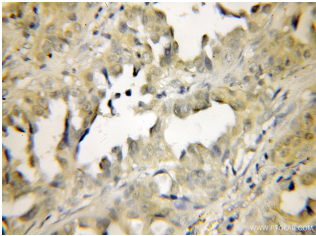
Size: 22 µg/150 µl

Source: Rabbit

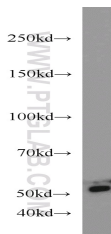
Isotype: IgG

Synonyms:

PEPD; Imidodipeptidase, PEPD, peptidase D, PRD, PROLIDASE, Proline dipeptidase, X Pro dipeptidase, Xaa Pro dipeptidase



Immunohistochemical of paraffin-embedded human lung cancer using 12218-1-AP(PEPD antibody) at dilution of 1:50 (under 10x lens)



HeLa cells were subjected to SDS PAGE followed by western blot with 12218-1-AP(PEPD antibody) at dilution of 1:600

Background

PEPD, also named as PRD, Prolidase, X-Pro dipeptidase, Imidodipeptidase, Peptidase D and Proline dipeptidase, belongs to the peptidase M24B family and Eukaryotic-type prolidase subfamily. PEPD splits dipeptides with a prolyl or hydroxyprolyl residue in the C-terminal position. It plays an important role in collagen metabolism because the high level of iminoacids in collagen. Defects in PEPD are a cause of prolidase deficiency (PD). PEPD is considered as the most promising candidate genes for altering AAA risk, based on gene function, association evidence, gene expression, and protein expression.(PMID:21247474)

Applications

Tested applications:	ELISA, WB, IHC
Cited applications:	IHC
Species specificity:	Human, Mouse; other species not tested.
Cited species:	Human
Calculated PEPD MW:	493aa,55 kDa
Observed PEPD MW:	55 kDa
Positive WB detected in	HeLa cells, HepG2 cells, MDA-MB-453s cells, mouse skin tissue
Positive IHC detected in	Human lung cancer tissue
Recommended dilution:	WB: 1:200-1:2000 IHC: 1:20-1:200

Application key: WB = Western blotting, IHC = Immunohistochemistry, IF = Immunofluorescence, IP = Immunoprecipitation

Immunogen information

Immunogen:	Ag2842
GenBank accession number:	BC015027
Gene ID (NCBI):	5184
Full name:	Peptidase D

Product information

Purification method:	Antigen affinity purification
Storage:	PBS with 0.1% sodium azide and 50% glycerol pH 7.3. Store at -20°C.