

## MTP18 Polyclonal Antibody

Catalog number: 14257-1-AP

Size: 20 µg/150 µl

Source: Rabbit

Isotype: IgG

Synonyms:

MTP18; HSPC242,

Mitochondrial 18 kDa protein,

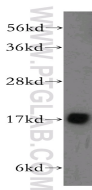
mitochondrial protein 18 kDa,

MTP18, My022

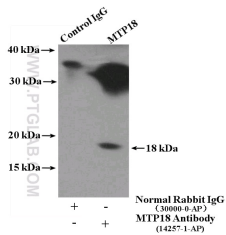
### Applications

<b>Tested applications:</b>	ELISA, WB, IP
<b>Species specificity:</b>	Human, Mouse, Rat; other species not tested.
<b>Calculated MTP18 MW:</b>	18 kDa
<b>Observed MTP18 MW:</b>	16-18 kDa
<b>Positive WB detected in</b>	Mouse skeletal muscle tissue, mouse heart tissue
<b>Positive IP detected in</b>	Mouse heart tissue
<b>Recommended dilution:</b>	WB: 1:200-1:2000 IP: 1:200-1:2000

Application key: WB = Western blotting, IHC = Immunohistochemistry, IF = Immunofluorescence, IP = Immunoprecipitation



mouse skeletal muscle tissue were subjected to SDS PAGE followed by western blot with 14257-1-AP(MTP18 antibody) at dilution of 1:300



IP Result of anti-MTP18 (IP:14257-1-AP, 4µg; Detection:14257-1-AP 1:500) with mouse heart tissue lysate 4000µg.

### Immunogen information

<b>Immunogen:</b>	Ag5530
<b>GenBank accession number:</b>	BC038831
<b>Gene ID (NCBI):</b>	51537
<b>Full name:</b>	Mitochondrial protein 18 kDa

### Product information

<b>Purification method:</b>	Antigen affinity purification
<b>Storage:</b>	PBS with 0.02% sodium azide and 50% glycerol pH 7.3. Store at -20°C.