

## DOK5 Polyclonal Antibody

Catalog number: 11948-1-AP

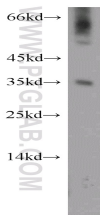
Size: 20 µg/150 µl

Source: Rabbit

Isotype: IgG

Synonyms:

DOK5; C20orf180, docking protein 5, DOK5, Insulin receptor substrate 6, IRS 6, IRS6



mouse liver tissue were subjected to SDS PAGE followed by western blot with 11948-1-AP(DOK5 antibody) at dilution of 1:300

### Background

DOK5 belongs to the docking family of proteins that contain tandem pleckstrin homology-phosphotyrosine binding (PH-PTB) domains at their amino termini (PMID: 19909370). DOK proteins are also known as insulin receptor substrates (IRS) and serve as substrates for insulin and insulin-like growth factor (PMID: 12730241) as well as various protein tyrosine kinases (PMID: 16647839). DOK5 functions as a specific signal transduction molecule and plays an important role in cellular differentiation. DOK5 is upregulated in systemic Sclerosis and Associated with IGFBP-5-Induced fibrosis (PMID: 24551065).

### Applications

Tested applications:	ELISA, WB
Species specificity:	Human,Mouse,Rat; other species not tested.
Calculated DOK5 MW:	306aa,35 kDa
Observed DOK5 MW:	35kd
Positive WB detected in	Mouse liver tissue
Recommended dilution:	WB: 1:500-1:5000

Application key: WB = Western blotting, IHC = Immunohistochemistry, IF = Immunofluorescence, IP = Immunoprecipitation

### Immunogen information

Immunogen:	Ag2615
GenBank accession number:	BC008992
Gene ID (NCBI):	55816
Full name:	Docking protein 5

### Product information

Purification method:	Antigen affinity purification
Storage:	PBS with 0.02% sodium azide and 50% glycerol pH 7.3. Store at -20°C.