

PI16 Polyclonal Antibody

Catalog number: 12267-1-AP

Size: 20 µg/150 µl

Source: Rabbit

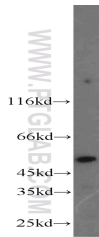
Isotype: IgG

Synonyms:

PI16; P116, CRISP 9,

DKFZp586B1817,

UNQ289/PRO328, CRISP9



A2780 cells were subjected to SDS PAGE followed by western blot with 12267-1-AP (PI16 antibody) at dilution of 1:200

Applications

| | |
|--------------------------|---|
| Tested applications: | ELISA, WB |
| Species specificity: | Human; other species not tested. |
| Calculated PI16 MW: | 463aa, 49 kDa |
| Observed PI16 MW: | 49-60kd, 30-35kd |
| Positive WB detected in: | A2780 cells, COLO 320 cells, SKOV-3 cells |
| Recommended dilution: | WB: 1:200-1:1000 |

Application key: WB = Western blotting, IHC = Immunohistochemistry, IF = Immunofluorescence, IP = Immunoprecipitation

Immunogen information

| | |
|---------------------------|------------------------|
| Immunogen: | Ag2925 |
| GenBank accession number: | BC022399 |
| Gene ID (NCBI): | 221476 |
| Full name: | Peptidase inhibitor 16 |

Product information

| | |
|----------------------|--|
| Purification method: | Antigen affinity purification |
| Storage: | PBS with 0.02% sodium azide and 50% glycerol pH 7.3. Store at -20°C. |