

HIBADH Polyclonal Antibody

Catalog number: 13466-1-AP

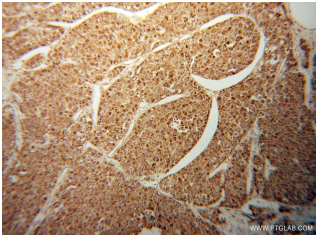
Size: 38 µg/150 µl

Source: Rabbit

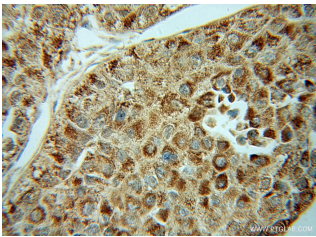
Isotype: IgG

Synonyms:

HIBADH; HIBADH, NS5ATP1



Immunohistochemical of paraffin-embedded human liver cancer using 13466-1-AP(HIBADH antibody) at dilution of 1:50 (under 10x lens)



Immunohistochemical of paraffin-embedded human liver cancer using 13466-1-AP(HIBADH antibody) at dilution of 1:50 (under 40x lens)

Applications

Tested applications:	ELISA, WB, IHC, IP
Cited applications:	WB
Species specificity:	Human, Mouse, Rat; other species not tested.
Cited species:	Mouse
Calculated HIBADH MW:	336aa, 35 kDa
Observed HIBADH MW:	35 kDa
Positive WB detected in	Mouse heart tissue, mouse ovary tissue, mouse thymus tissue
Positive IP detected in	Mouse heart tissue
Positive IHC detected in	Human liver cancer tissue
Recommended dilution:	WB: 1:200-1:2000 IP: 1:200-1:2000 IHC: 1:20-1:200

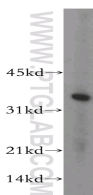
Application key: WB = Western blotting, IHC = Immunohistochemistry, IF = Immunofluorescence, IP = Immunoprecipitation

Immunogen information

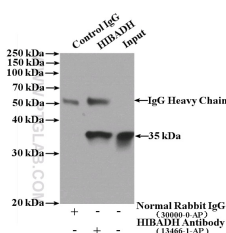
Immunogen:	Ag4258
GenBank accession number:	BC032324
Gene ID (NCBI):	11112
Full name:	3-hydroxyisobutyrate dehydrogenase

Product information

Purification method:	Antigen affinity purification
Storage:	PBS with 0.02% sodium azide and 50% glycerol pH 7.3. Store at -20°C.



mouse heart tissue were subjected to SDS PAGE followed by western blot with 13466-1-AP(HIBADH antibody) at dilution of 1:400



IP Result of anti-HIBADH
(IP:13466-1-AP, 4µg;
Detection:13466-1-AP 1:800)
with mouse heart tissue lysate

4000ug.