

## SMC5 Polyclonal Antibody

Catalog number: 14178-1-AP

Size: 27 µg/150 µl

Source: Rabbit

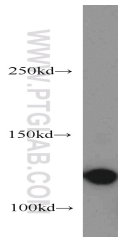
Isotype: IgG

Synonyms:

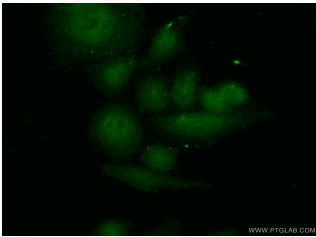
SMC5; hSMC5, KIAA0594, SMC

5, SMC protein 5, SMC5,

SMC5L1



HeLa cells were subjected to SDS PAGE followed by western blot with 14178-1-AP(SMC5 antibody) at dilution of 1:500



Immunofluorescent analysis of ( 10% Formaldehyde ) fixed HeLa cells using 14178-1-AP( SMC5 Antibody) at dilution of 1:50 and Alexa Fluor 488-conjugated AffiniPure Goat Anti-Rabbit IgG(H+L)

### Applications

Tested applications:	ELISA, WB, IF
Species specificity:	Human,Mouse,Rat; other species not tested.
Calculated SMC5 MW:	1101aa,129 kDa
Observed SMC5 MW:	120-130 kDa
Positive WB detected in	HeLa cells
Positive IF detected in	HeLa cells
Recommended dilution:	WB: 1:500-1:5000 IF: 1:50-1:500

Application key: WB = Western blotting, IHC = Immunohistochemistry, IF = Immunofluorescence, IP = Immunoprecipitation

### Immunogen information

Immunogen:	Ag5385
GenBank accession number:	BC038225
Gene ID (NCBI):	23137
Full name:	Structural maintenance of chromosomes 5

### Product information

Purification method:	Antigen affinity purification
Storage:	PBS with 0.02% sodium azide and 50% glycerol pH 7.3. Store at -20°C.