

CDCA8 Polyclonal Antibody

Catalog number: 12465-1-AP

Size: 44 µg/150 µl

Source: Rabbit

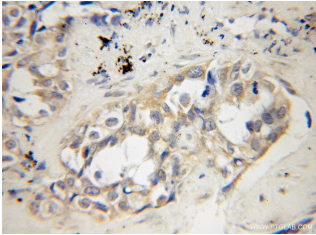
Isotype: IgG

Synonyms:

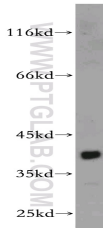
CDCA8; BOR, BOREALIN,

CDCA8, Dasra B, FLJ10468,

FLJ12042, hDasra B, PESCRG3



Immunohistochemical of paraffin-embedded human lung cancer using 12465-1-AP(CDCA8 antibody) at dilution of 1:50 (under 10x lens)



mouse kidney tissue were subjected to SDS PAGE followed by western blot with 12465-1-AP(CDCA8 antibody) at dilution of 1:300

Applications

Tested applications:	ELISA, WB, IHC
Species specificity:	Human,Mouse,Rat; other species not tested.
Calculated CDCA8 MW:	280aa,31 kDa
Observed CDCA8 MW:	38-40 kDa
Positive WB detected in	Mouse kidney tissue
Positive IHC detected in	Human lung cancer tissue
Recommended dilution:	WB: 1:200-1:1000 IHC: 1:20-1:200

Application key: WB = Western blotting, IHC = Immunohistochemistry, IF = Immunofluorescence, IP = Immunoprecipitation

Immunogen information

Immunogen:	Ag3136
GenBank accession number:	BC016944
Gene ID (NCBI):	55143
Full name:	Cell division cycle associated 8

Product information

Purification method:	Antigen affinity purification
Storage:	PBS with 0.1% sodium azide and 50% glycerol pH 7.3. Store at -20°C.