

EIF2B2 Polyclonal Antibody

Catalog number: 11034-1-AP

Size: 36 µg/150 µl

Source: Rabbit

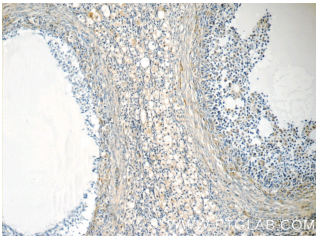
Isotype: IgG

Synonyms:

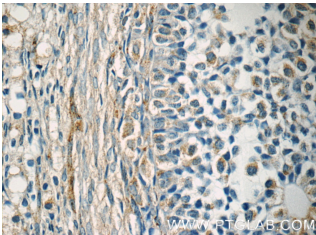
EIF2B2; EIF 2Bbeta, EIF2B,

EIF2B2, EIF2BB, S20I15,

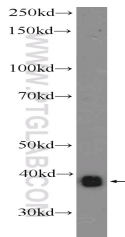
S20III15



Immunohistochemistry of paraffin-embedded human ovary tissue slide using 11034-1-AP (EIF2B2 Antibody) at dilution of 1:50 (under 10x lens)



Immunohistochemistry of paraffin-embedded human ovary tissue slide using 11034-1-AP(EIF2B2 Antibody) at dilution of 1:50 (under 40x lens)



K-562 cells were subjected to SDS PAGE followed by western blot with 11034-1-AP(EIF2B2 Antibody) at dilution of 1:1000

Applications

Tested applications:	ELISA, IHC, WB
Cited applications:	WB
Species specificity:	Human, Mouse, Rat; other species not tested.
Cited species:	Human
Calculated EIF2B2 MW:	39 kDa
Observed EIF2B2 MW:	39 kDa
Positive WB detected in	K-562 cells, A431 cells, HEK-293 cells, mouse liver tissue
Positive IHC detected in	Human ovary tissue, human colon cancer tissue
Recommended dilution:	WB: 1:500-1:5000 IHC: 1:20-1:200

Application key: WB = Western blotting, IHC = Immunohistochemistry, IF = Immunofluorescence, IP = Immunoprecipitation

Immunogen information

Immunogen:	Ag1502
GenBank accession number:	BC011750
Gene ID (NCBI):	8892
Full name:	Eukaryotic translation initiation factor 2B, subunit 2 beta, 39kDa

Product information

Purification method:	Antigen affinity purification
Storage:	PBS with 0.1% sodium azide and 50% glycerol pH 7.3. Store at -20°C.