

Rabbit Anti-Eastern Equine Encephalitis (EEEV) E2 Glycoprotein Polyclonal Ab

Catalog #: 0318-001

Lot #: 1507004

Immunogen: Peptide sequence specific to EEEV E2 glycoprotein.

Description: Affinity-purified rabbit polyclonal antibody reactive to EEEV E2 glycoprotein.

Supplied: 100 µg is supplied in PBS + 0.02% sodium azide at a concentration of **0.303 mg/mL**.

Raised in: Rabbits

Clonality: Polyclonal

Relevance: The antibody can be used for alphavirus research.

Recommended Dilutions:

ELISA: Assay-dependent dilution.

Western Blot: Assay-dependent dilution.

Storage: 2-3 weeks +4°C, -20°C long term. Avoid multiple freeze thaws.

Cross Reactivity: No cross reactivity was observed with Western Equine Encephalitis (WEEV) E3E2/E2 glycoprotein.

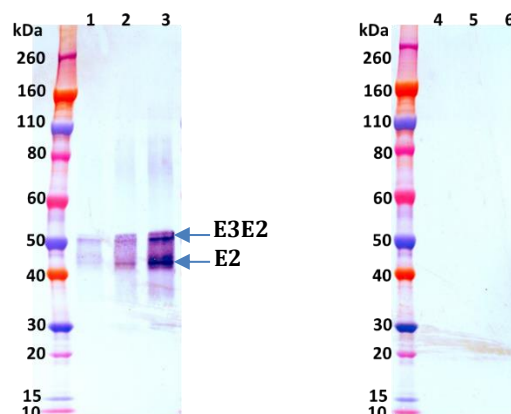
Related Products: IBT provides a wide array of alphavirus, filovirus proteins and antibodies and other infectious disease reagents. Please see our website, www.ibtbioservices.com for more details.

Intended for research use only, not for human, therapeutic, or diagnostic applications.

The buyer cannot sell or otherwise transfer this product for Commercial Purposes without written approval of Integrated BioTherapeutics, Inc.

Copyright 2015. Integrated BioTherapeutics, Inc. All rights reserved.

Western Blot Detection



Rabbit anti-EEEV E2 polyclonal Ab at 500 ng/mL was able to detect EEEV E3E2/E2 glycoprotein (cat # 0560-001) loaded at 50, 100 and 200 ng/lane (lanes 1-3). No cross-reactivity against WEEV E3E2/E2 glycoprotein (cat # 0561-001) was observed (lanes 4-6). Western Blot was visualized using an anti-rabbit IgG-HRP conjugate and TMB Membrane substrate.

ELISA Data:

Anti-EEEV pAb Concentration in µg/mL	OD 650 nm
10.0000	3.990
3.1623	3.924
1.0000	3.583
0.3162	2.731
0.1000	1.481
0.0316	0.555
0.0100	0.227
0.0032	0.106
0.0010	0.065
0.0003	0.058
0.0001	0.050
0.0000	0.057

EEEV E3E2/E2 protein was diluted to 4 µg/mL in PBS for plate coating. Rabbit anti-EEEV E2 pAb was serially diluted semi-log from 10 µg/mL and incubated on the coated plates. Washed plates were detected with anti-rabbit IgG-HRP conjugate and TMB substrate. OD650 is reported above.