

DLK1 Polyclonal Antibody

Catalog number: 10636-1-AP

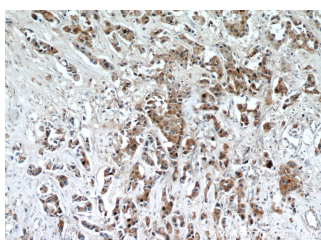
Size: 51 µg/150 µl

Source: Rabbit

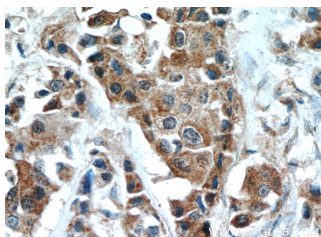
Isotype: IgG

Synonyms:

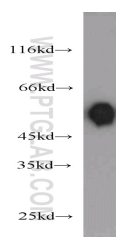
DLK1; DLK, DLK 1, DLK1, FA1, pG2, Pref 1, PREF1, Protein delta homolog 1, ZOG



Immunohistochemical of paraffin-embedded human breast cancer using 10636-1-AP (DLK1 antibody) at dilution of 1:50 (under 10x lens)



Immunohistochemical of paraffin-embedded human breast cancer using 10636-1-AP (DLK1 antibody) at dilution of 1:50 (under 40x lens)



mouse placenta tissue were subjected to SDS PAGE followed by western blot with 10636-1-AP (DLK1 antibody) at dilution of 1:1000

Background

DLK1, also named PREF1, FA1, or pG2, is a transmembrane protein belonging to the epidermal growth factor (EGF)-like superfamily (PMID: 8095043). It contains six EGF-like repeats in the extracellular region. DLK1 is abundant in preadipocytes and regulate adipocyte differentiation negatively (PMID: 8500166). Deficiency of DLK1 gives rise to growth retardation and accelerated adiposity in mouse model. Expression of DLK1 is found in tumors with neuroendocrine features that implies DLK1 may be involved in neuroendocrine differentiation (PMID: 8095043). It has been reported overexpression of DLK1 could lead to the development of metabolic abnormalities by impairment of adipocyte function in mice (PMID: 12588883). The gene of DLK1 maps to chromosome 14q32, and encodes a 383-amino acid protein with a calculated molecular mass of 41 kDa. In preadipocytes, multiple discrete forms of DLK1 protein of 45-60 kDa are present, owing in part to N-linked glycosylation (PMID: 8500166).

Applications

Tested applications:	ELISA, WB, IHC
Cited applications:	FACS, IHC, WB
Species specificity:	Human, Mouse, Rat; other species not tested.
Cited species:	Human, mouse, pig, rat
Calculated DLK1 MW:	41kd
Observed DLK1 MW:	45-60kd
Positive WB detected in	Mouse placenta tissue, A549 cells, human placenta tissue, MCF7 cells, mouse brain tissue, mouse ovary tissue
Positive IHC detected in	Human breast cancer tissue
Recommended dilution:	WB: 1:400 - 1:1600 IHC: 1:25 - 1:100

Application key: WB = Western blotting, IHC = Immunohistochemistry, IF = Immunofluorescence, IP = Immunoprecipitation

Immunogen information

Immunogen:	Ag0991
GenBank accession number:	BC007741
Gene ID (NCBI):	8788
Full name:	Delta-like 1 homolog (Drosophila)

Product information

Purification method:	Antigen affinity purification
Storage:	PBS with 0.1% sodium azide and 50% glycerol pH 7.3. Store at -20°C.