

NFKBIE Polyclonal Antibody

Catalog number: 11273-1-AP

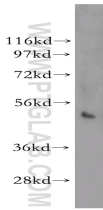
Size: 35 µg/150 µl

Source: Rabbit

Isotype: IgG

Synonyms:

NFKBIE; I kappa B epsilon,
IkappaBepsilon, IκB E, IκB
epsilon, IKBE, NF kappa B
inhibitor epsilon, NF kappa BIE,
NFKBIE



human spleen tissue were subjected to SDS PAGE followed by western blot with 11273-1-AP(NFKBIE antibody) at dilution of 1:500

Applications

Tested applications:	ELISA, WB
Species specificity:	Human,Mouse,Rat; other species not tested.
Calculated NFKBIE MW:	51 kDa
Observed NFKBIE MW:	51 kDa
Positive WB detected in	Human spleen tissue
Recommended dilution:	WB: 1:200-1:2000

Application key: WB = Western blotting, IHC = Immunohistochemistry, IF = Immunofluorescence, IP = Immunoprecipitation

Immunogen information

Immunogen:	Ag1800
GenBank accession number:	BC011676
Gene ID (NCBI):	4794
Full name:	Nuclear factor of kappa light polypeptide gene enhancer in B-cells inhibitor, epsilon

Product information

Purification method:	Antigen affinity purification
Storage:	PBS with 0.1% sodium azide and 50% glycerol pH 7.3. Store at -20°C.