

LMNB2 Polyclonal Antibody

Catalog number: 10895-1-AP

Size: 20 µg/150 µl

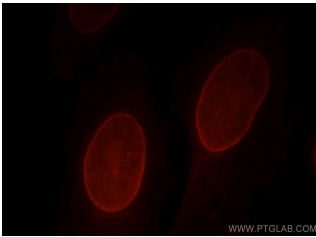
Source: Rabbit

Isotype: IgG

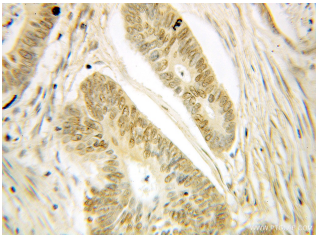
Synonyms:

LMNB2; LAMB2, lamin B2,

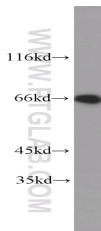
LMN2, LMNB2



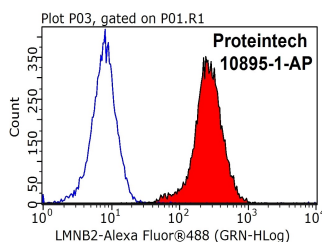
Immunofluorescent analysis of HepG2 cells, using LMNB2 antibody 10895-1-AP at 1:25 dilution and Rhodamine-labeled goat anti-rabbit IgG (red).



Immunohistochemical of paraffin-embedded human colon cancer using 10895-1-AP(LMNB2 antibody) at dilution of 1:100 (under 10x lens)



Jurkat cells were subjected to SDS PAGE followed by western blot with 10895-1-AP(LMNB2 antibody) at dilution of 1:2000



1X10⁶ HEK-293T cells were stained with 0.2ug LMNB2 antibody (10895-1-AP, red)

Applications

Tested applications:	ELISA, WB, IHC, IF, FC, IP
Cited applications:	IF, WB
Species specificity:	Human, Mouse, Rat; other species not tested.
Cited species:	Human
Calculated LMNB2 MW:	68 kDa
Observed LMNB2 MW:	66-68kd
Positive WB detected in	Jurkat cells, BxPC-3 cells, HEK-293 cells, HeLa cells, HL-60 cells, MCF7 cells, mouse brain tissue
Positive IP detected in	Jurkat cells
Positive IHC detected in	Human colon cancer tissue
Positive IF detected in	HepG2 cells, SH-SY5Y cells
Positive FC detected in	HEK-293T cells
Recommended dilution:	WB: 1:1000-1:10000 IP: 1:200-1:2000 IHC: 1:20-1:200 IF: 1:10-1:100 FC: N/A

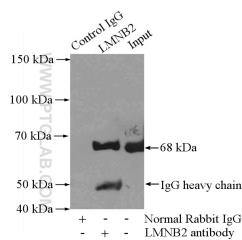
Application key: WB = Western blotting, IHC = Immunohistochemistry, IF = Immunofluorescence, IP = Immunoprecipitation

Immunogen information

Immunogen:	Ag1335
GenBank accession number:	BC006551
Gene ID (NCBI):	84823
Full name:	Lamin B2

Product information

Purification method:	Antigen affinity purification
Storage:	PBS with 0.1% sodium azide and 50% glycerol pH 7.3. Store at -20°C.



IP Result of anti-LMNB2
(IP:10895-1-AP, 3ug;
Detection:10895-1-AP 1:500)

and control antibody (blue). with Jurkat cells lysate
Fixed with 90% MeOH 2400ug.
blocked with 3% BSA (30
min). Alexa Fluor 488-
conjugated AffiniPure Goat
Anti-Rabbit IgG(H+L) with
dilution 1:1000.