

## RBM6 Polyclonal Antibody

Catalog number: 14360-1-AP

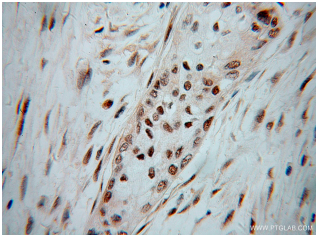
Size: 27 µg/150 µl

Source: Rabbit

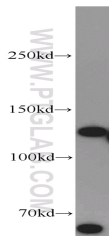
Isotype: IgG

Synonyms:

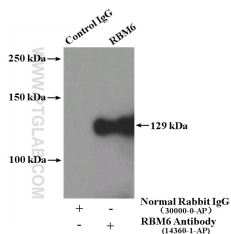
RBM6; 3G2, DEF 3, DEF3,  
DKFZp686B0877, FLJ36517, g16,  
HLC 11, Lung cancer antigen NY  
LU 12, NY LU 12, Protein G16,  
RBM6, RNA binding motif  
protein 6, RNA binding protein  
6, RNA binding protein DEF 3



Immunohistochemical of paraffin-embedded human pancreas cancer using 14360-1-AP (RBM6 antibody) at dilution of 1:100 (under 40x lens)



HeLa cells were subjected to SDS PAGE followed by western blot with 14360-1-AP (RBM6 antibody) at dilution of 1:300



IP Result of anti-RBM6 (IP:14360-1-AP, 4ug; Detection:14360-1-AP 1:500) with HeLa cells lysate 2000ug.

### Applications

Tested applications:	ELISA, WB, IHC, IP
Species specificity:	Human, Mouse, Rat; other species not tested.
Calculated RBM6 MW:	129 kDa
Observed RBM6 MW:	129 kDa
Positive WB detected in:	HeLa cells, mouse spleen tissue
Positive IP detected in:	HeLa cells
Positive IHC detected in:	Human pancreas cancer tissue
Recommended dilution:	WB: 1:200-1:2000 IP: 1:200-1:2000 IHC: 1:20-1:200

Application key: WB = Western blotting, IHC = Immunohistochemistry, IF = Immunofluorescence, IP = Immunoprecipitation

### Immunogen information

Immunogen:	Ag5743
GenBank accession number:	BC046643
Gene ID (NCBI):	10180
Full name:	RNA binding motif protein 6

### Product information

Purification method:	Antigen affinity purification
Storage:	PBS with 0.02% sodium azide and 50% glycerol pH 7.3. Store at -20°C.