

## CPN1 Polyclonal Antibody

Catalog number: 13385-1-AP

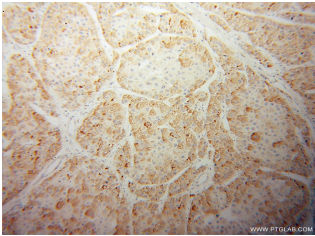
Size: 20 µg/150 µl

Source: Rabbit

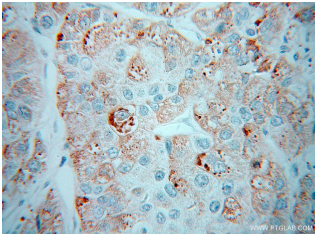
Isotype: IgG

Synonyms:

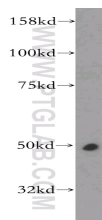
CPN1; ACBP, Anaphylatoxin inactivator, Arginine carboxypeptidase, CPN, CPN1, FLJ40792, Kininase 1, Lysine carboxypeptidase, Plasma carboxypeptidase B, SCPN, Serum carboxypeptidase N



Immunohistochemical of paraffin-embedded human liver cancer using 13385-1-AP(CPN1 antibody) at dilution of 1:100 (under 10x lens)



Immunohistochemical of paraffin-embedded human liver cancer using 13385-1-AP(CPN1 antibody) at dilution of 1:100 (under 40x lens)



Raji cells were subjected to SDS PAGE followed by western blot with 13385-1-AP(CPN1 antibody) at dilution of 1:300

### Applications

Tested applications:	ELISA, WB, IHC, FC
Species specificity:	Human, Mouse, Rat; other species not tested.
Calculated CPN1 MW:	458aa, 52 kDa
Observed CPN1 MW:	50kd
Positive WB detected in:	Raji cells, COLO 320 cells
Positive IHC detected in:	Human liver cancer tissue
Positive FC detected in:	HeLa cells
Recommended dilution:	WB: 1:500-1:5000 IHC: 1:20-1:200 FC: N/A

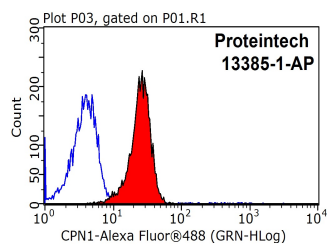
Application key: WB = Western blotting, IHC = Immunohistochemistry, IF = Immunofluorescence, IP = Immunoprecipitation

### Immunogen information

Immunogen:	Ag4035
GenBank accession number:	BC027897
Gene ID (NCBI):	1369
Full name:	Carboxypeptidase N, polypeptide 1

### Product information

Purification method:	Antigen affinity purification
Storage:	PBS with 0.02% sodium azide and 50% glycerol pH 7.3. Store at -20°C.



**1X10<sup>6</sup> HeLa cells were stained with 0.2ug CPN1 antibody (13385-1-AP, red) and control antibody (blue). Fixed with 90% MeOH blocked with 3% BSA (30 min). Alexa Fluor 488-conjugated AffiniPure Goat Anti-Rabbit IgG(H+L) with dilution 1:1500.**