

SULT1A4 Polyclonal Antibody

Catalog number: 11376-1-AP

Size: 67 µg/150 µl

Source: Rabbit

Isotype: IgG

Synonyms:

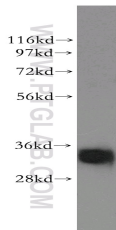
SULT1A4; Aryl sulfotransferase

1A3/1A4, HAST3, M PST,

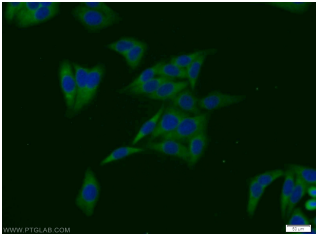
ST1A3/ST1A4, STM,

Sulfotransferase 1A3/1A4,

SULT1A3, SULT1A4, TL PST



human colon tissue were subjected to SDS PAGE followed by western blot with 11376-1-AP(SULT1A4 antibody) at dilution of 1:300



Immunofluorescent analysis of HepG2 cells using 11376-1-AP(SULT1A4 Antibody) at dilution of 1:25 and Alexa Fluor 488-conjugated AffiniPure Goat Anti-Rabbit IgG(H+L)

Applications

Tested applications:	ELISA, WB, IF
Species specificity:	Human, Mouse; other species not tested.
Calculated SULT1A4 MW:	295aa,34 kDa
Observed SULT1A4 MW:	30-34 kDa
Positive WB detected in	Human colon tissue, BxPC-3 cells, HepG2 cells, human pancreas tissue, mouse pancreas tissue
Positive IF detected in	HepG2 cells
Recommended dilution:	WB: 1:500-1:5000 IF: 1:10-1:100

Application key: WB = Western blotting, IHC = Immunohistochemistry, IF = Immunofluorescence, IP = Immunoprecipitation

Immunogen information

Immunogen:	Ag1935
GenBank accession number:	BC014471
Gene ID (NCBI):	445329
Full name:	Sulfotransferase family, cytosolic, 1A, phenol-preferring, member 4

Product information

Purification method:	Antigen affinity purification
Storage:	PBS with 0.1% sodium azide and 50% glycerol pH 7.3. Store at -20°C.