

Integrin beta-7 Polyclonal Antibody

Catalog number: 11328-1-AP

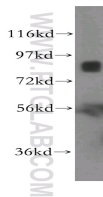
Size: 45 µg/150 µl

Source: Rabbit

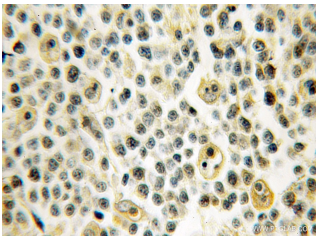
Isotype: IgG

Synonyms:

ITGB7;



K-562 cells were subjected to SDS PAGE followed by western blot with 11328-1-AP(Integrin beta-7 Antibody) at dilution of 1:1000



Immunohistochemistry of paraffin-embedded human lymphoma using 11328-1-AP(Integrin beta-7 Antibody) at Dilution 1:50 (under 10x lens)

Background

ITGB7 (integrin, beta7) is a single-pass type I membrane protein that belongs to the integrin beta chain family. The integrins are a large family of cell-surface glycoprotein receptors that play key roles in leucocyte adhesion, signalling, proliferation and migration by binding as heterodimers to specific ligands. The beta7 integrin associates with alpha4 integrin to form a heterodimer, alpha4/beta7, which interacts with MADCAM1, VCAM, fibronectin, and may also interact with HIV-1 gp120. The beta7 integrin can also form a heterodimer with alphaE integrin, and the dimer, alphaE/beta7 integrin, is a receptor for E-cadherin. ITGB7 is expressed in a variety of leukocyte lines.

Applications

Tested applications:	ELISA, WB, IHC
Cited applications:	IHC
Species specificity:	Human, Mouse, Rat; other species not tested.
Cited species:	Human
Positive WB detected in:	K-562 cells, human lung tissue
Calculated Integrin beta-7 MW:	798aa, 87kd
Observed Integrin beta-7 MW:	87kd
Positive IHC detected in:	Human lymphoma
Recommended dilution:	WB: 1:500-1:5000 IHC: 1:20-1:200

Application key: WB = Western blotting, IHC = Immunohistochemistry, IF = Immunofluorescence, IP = Immunoprecipitation, FC = Flow cytometry

Immunogen information

Immunogen:	Ag1871
GenBank accession number:	BC015916
Gene ID (NCBI):	3695
Full name:	Integrin, beta 7

Product information

Purification method:	Antigen affinity purification
Storage:	PBS with 0.1% sodium azide and 50% glycerol pH 7.3. Store at -20°C.