

TRAM1 Polyclonal Antibody

Catalog number: 12705-1-AP

Size: 40 µg/150 µl

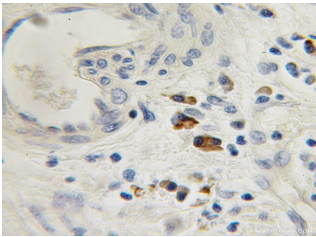
Source: Rabbit

Isotype: IgG

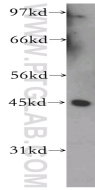
Synonyms:

TRAM1; PNAS 8, PRO1292,

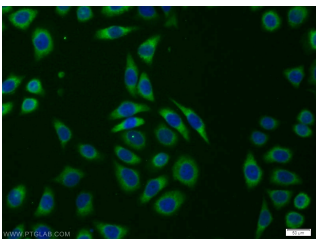
TRAM, TRAM1, TRAMP



Immunohistochemical of paraffin-embedded human prostate cancer using 12705-1-AP (TRAM1 antibody) at dilution of 1:50 (under 10x lens)



K-562 cells were subjected to SDS PAGE followed by western blot with 12705-1-AP (TRAM1 antibody) at dilution of 1:300



Immunofluorescent analysis of PC-3 cells using 12705-1-AP (TRAM1 Antibody) at dilution of 1:25 and Alexa Fluor 488-conjugated AffiniPure Goat Anti-Rabbit IgG(H+L)

Applications

Tested applications:	ELISA, WB, IHC, IF
Species specificity:	Human, Mouse, Rat; other species not tested.
Calculated TRAM1 MW:	374aa, 43 kDa
Observed TRAM1 MW:	43 kDa
Positive WB detected in	K-562 cells, HeLa cells, Jurkat cells, PC-3 cells
Positive IHC detected in	Human prostate cancer tissue
Positive IF detected in	PC-3 cells
Recommended dilution:	WB: 1:500-1:5000 IHC: 1:20-1:200 IF: 1:10-1:100

Application key: WB = Western blotting, IHC = Immunohistochemistry, IF = Immunofluorescence, IP = Immunoprecipitation

Immunogen information

Immunogen:	Ag3384
GenBank accession number:	BC037738
Gene ID (NCBI):	23471
Full name:	Translocation associated membrane protein 1

Product information

Purification method:	Antigen affinity purification
Storage:	PBS with 0.1% sodium azide and 50% glycerol pH 7.3. Store at -20°C.