

LENG1 Polyclonal Antibody

Catalog number: 11406-1-AP

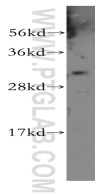
Size: 34 µg/150 µl

Source: Rabbit

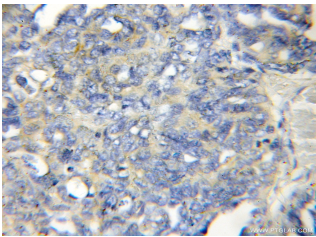
Isotype: IgG

Synonyms:

LENG1;



human skin tissue were subjected to SDS PAGE followed by western blot with 11406-1-AP(LENG1 Antibody) at dilution of 1:500



Immunohistochemistry of paraffin-embedded human ovary tumor using 11406-1-AP(LENG1 Antibody) at Dilution 1:50 (under 10x lens)

Applications

Tested applications:	ELISA, WB, IHC
Species specificity:	Human, mouse, rat; other species not tested.
Positive WB detected in:	Human skin tissue
Calculated LENG1 MW:	264aa,31kd
Observed LENG1 MW:	31kd
Positive IHC detected in:	Human ovary tumor
Recommended dilution:	WB: 1:200-1:2000 IHC: 1:20-1:200

Application key: WB = Western blotting, IHC = Immunohistochemistry, IF = Immunofluorescence, IP = Immunoprecipitation, FC = Flow cytometry

Immunogen information

Immunogen:	Ag1924
GenBank accession number:	BC014986
Gene ID (NCBI):	79165
Full name:	Leukocyte receptor cluster (LRC) member 1

Product information

Purification method:	Antigen affinity purification
Storage:	PBS with 0.1% sodium azide and 50% glycerol pH 7.3. Store at -20°C.