

## EVL Polyclonal Antibody

Catalog number: 13484-1-AP

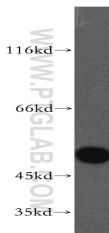
Size: 94 µg/150 µl

Source: Rabbit

Isotype: IgG

Synonyms:

EVL; RNB6



Jurkat cells were subjected to SDS PAGE followed by western blot with 13484-1-AP (EVL Antibody) at dilution of 1:1000

### Background

EVL (Ena/VASP-like protein) is implicated in processes that require dynamic actin remodeling such as axon guidance and platelet activation. It has two isoforms, EVL and EVL-1, that are highly expressed in hematopoietic cells of thymus and spleen, and both isoforms can be phosphorylated by PKA in vitro (PMID10945997).

### Applications

Tested applications:	ELISA, WB
Species specificity:	Human, mouse, rat; other species not tested.
Positive WB detected in:	Jurkat cells
Calculated EVL MW:	418aa, 45kd
Observed EVL MW:	50kd
Recommended dilution:	WB: 1:500-1:5000

Application key: WB = Western blotting, IHC = Immunohistochemistry, IF = Immunofluorescence, IP = Immunoprecipitation, FC = Flow cytometry

### Immunogen information

Immunogen:	Ag4302
GenBank accession number:	BC032358
Gene ID (NCBI):	51466
Full name:	Enah/Vasp-like

### Product information

Purification method:	Antigen affinity purification
Storage:	PBS with 0.02% sodium azide and 50% glycerol pH 7.3. Store at -20°C.