

ECM1 Polyclonal Antibody

Catalog number: 11521-1-AP

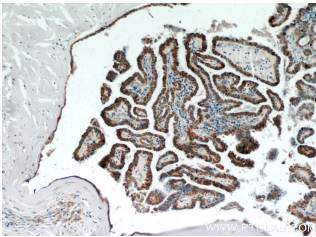
Size: 28 µg/150 µl

Source: Rabbit

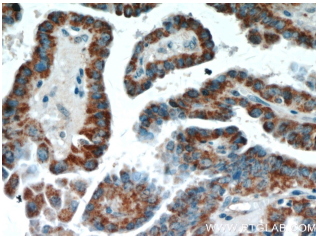
Isotype: IgG

Synonyms:

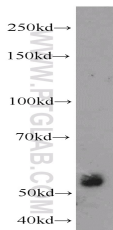
ECM1; ECM1, extracellular matrix protein 1, Secretory component p85



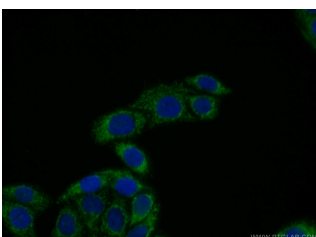
Immunohistochemical of paraffin-embedded human thyroid cancer using 11521-1-AP (ECM1 antibody) at dilution of 1:100 (under 10x lens)



Immunohistochemical of paraffin-embedded human thyroid cancer using 11521-1-AP (ECM1 antibody) at dilution of 1:100 (under 40x lens)



A549 cells were subjected to SDS PAGE followed by western blot with 11521-1-AP (ECM1 antibody) at dilution of 1:1500



Immunofluorescent analysis

Background

Extracellular matrix protein 1 (ECM1) is a glycoprotein involved in a number of biological processes such as bone formation, skin differentiation, cell proliferation, and promotes angiostasis. ECM1 is expressed in breast cancer and could participate in cell migration and angiogenesis. Pathologically, ECM1 contributes to the formation and metastasis of several types of cancer including breast, thyroid and hepatocellular cancers. (PMID:21128013) It inhibits MMP9 proteolytic activity. ECM1 protein is a possible trigger for angiogenesis, tumor progression and malignancies (PMID:21497598).

Applications

Tested applications:	ELISA, WB, IHC, IF
Cited applications:	IF, IHC, WB
Species specificity:	Human, Mouse, Rat; other species not tested.
Cited species:	Human
Calculated ECM1 MW:	540aa, 61 kDa
Observed ECM1 MW:	50-55 kDa
Positive WB detected in	A549 cells, HepG2 cells, L02 cells, MCF7 cells, mouse kidney tissue, mouse liver tissue, mouse pancreas tissue, rat pancreas tissue
Positive IHC detected in	Human thyroid cancer tissue, human breast cancer tissue, human lung cancer tissue, human pancreas cancer tissue
Positive IF detected in	HepG2 cells
Recommended dilution:	WB: 1:500-1:5000 IHC: 1:20-1:200 IF: 1:50-1:500

Application key: WB = Western blotting, IHC = Immunohistochemistry, IF = Immunofluorescence, IP = Immunoprecipitation

Immunogen information

Immunogen:	Ag2084
GenBank accession number:	BC023505
Gene ID (NCBI):	1893
Full name:	Extracellular matrix protein 1

Product information

Purification method:	Antigen affinity purification
Storage:	PBS with 0.1% sodium azide and 50% glycerol pH 7.3. Store at -20°C.

of (10% Formaldehyde) fixed
HepG2 cells using 11521-1-
AP(ECM1 Antibody) at
dilution of 1:50 and Alexa
Fluor 488-conjugated
AffiniPure Goat Anti-Rabbit
IgG(H+L)