

## SAE1 Polyclonal Antibody

Catalog number: 10229-1-AP

Size: 33 µg/150 µl

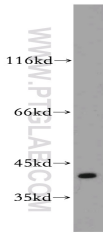
Source: Rabbit

Isotype: IgG

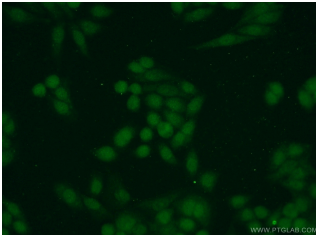
Synonyms:

SAE1; AOS1, FLJ3091, HSPC140,

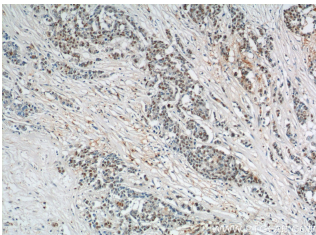
SAE1, SUA1, UBLE1A



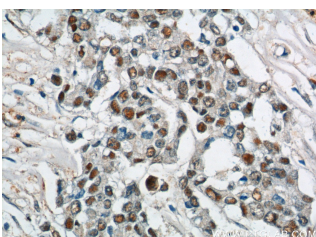
A431 cells were subjected to SDS PAGE followed by western blot with 10229-1-AP(SAE1 antibody) at dilution of 1:300



Immunofluorescent analysis of HeLa cells using 10229-1-AP( SAE1 Antibody) at dilution of 1:50 and Alexa Fluor 488-conjugated AffiniPure Goat Anti-Rabbit IgG(H+L)



Immunohistochemistry of paraffin-embedded human colon cancer tissue slide using 10229-1-AP( SAE1 Antibody) at dilution of 1:200 (under 10x lens).



Immunohistochemistry of paraffin-embedded human

### Background

SAE1(SUMO-activating enzyme subunit 1) is also named as AOS1, SUA1, UBLE1A and belongs to the ubiquitin-activating E1 family. SAE1 has a calculated molecular mass of 38 kD. It had an apparent molecular mass of 40 kD by SDS-PAGE. SAE1 and UBA2 form a heterodimer that functions as a SUMO-activating enzyme for the sumoylation of proteins(PMID:9920803). Western blot analysis of synchronized HeLa cells detects increased AOS1 expression as cells progressed through S phase, followed by a substantial decrease in G2 phase. Immunofluorescence analysis shows AOS1 and UBA2 distributed throughout nuclei, but they are excluded from nucleoli.(PMID:11481243).

### Applications

Tested applications:	ELISA, WB, IF, IHC
Species specificity:	Human,Mouse,Rat; other species not tested.
Calculated SAE1 MW:	38 kDa
Observed SAE1 MW:	38 kDa
Positive WB detected in	A431 cells, A549 cells, COLO 320 cells, HEK-293 cells, HeLa cells
Positive IHC detected in	Human colon cancer tissue, human skin cancer tissue
Positive IF detected in	HeLa cells
Recommended dilution:	WB: 1:200-1:1000 IHC: 1:20-1:200 IF: 1:20-1:200

Application key: WB = Western blotting, IHC = Immunohistochemistry, IF = Immunofluorescence, IP = Immunoprecipitation

### Immunogen information

Immunogen:	Ag0275
GenBank accession number:	BC000344
Gene ID (NCBI):	10055
Full name:	SUMO1 activating enzyme subunit 1

### Product information

Purification method:	Antigen affinity purification
Storage:	PBS with 0.1% sodium azide and 50% glycerol pH 7.3. Store at -20°C.

colon cancer tissue slide using  
10229-1-AP ( SAE1 Antibody)  
at dilution of 1:200 (under 40x  
lens).