

DCX PolyAb Antibody

Catalog number: 13925-1-AP

Size: 29 µg/150 µl

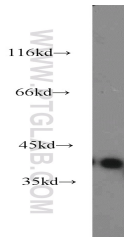
Source: Rabbit

Isotype: IgG

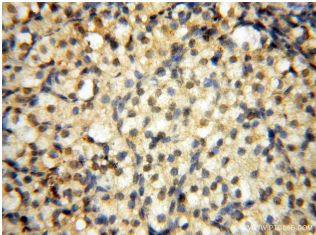
Synonyms:

DCX; DBCN; DC; LISX; SCLH;

XLIS



human brain tissue were subjected to SDS PAGE followed by western blot with 13925-1-AP(DCX Antibody) at dilution of 1:600



Immunohistochemistry of paraffin-embedded human ovary using 13925-1-AP(DCX Antibody) at Dilution 1:50 (under 40x lens)

Applications

Tested applications:	ELISA, WB, IHC
Species specificity:	Human, Mouse, Rat; other species not tested.
Positive WB detected in:	Human brain tissue, human brain tissue
Calculated DCX MW:	402aa, 45kd
Observed DCX MW:	40kd
Positive IHC detected in:	Human ovary
Recommended dilution:	WB: 1:200-1:2000 IHC: 1:20-1:200

Application key: WB = Western blotting, IHC = Immunohistochemistry, IF = Immunofluorescence, IP = Immunoprecipitation, FC = Flow cytometry

Immunogen information

Immunogen:	Ag4945
GenBank accession number:	BC027925
Gene ID (NCBI):	1641
Full name:	Doublecortin

Product information

Purification method:	Antigen affinity purification
Storage:	PBS with 0.02% sodium azide and 50% glycerol pH 7.3. Store at -20°C.