

## ASF1B Polyclonal Antibody

Catalog number: 11011-1-AP

Size: 37 µg/150 µl

Source: Rabbit

Isotype: IgG

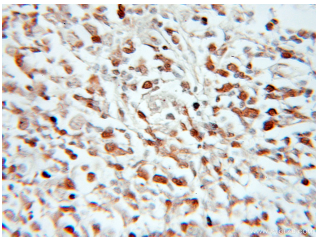
Synonyms:

ASF1B; ASF1B, CCG1

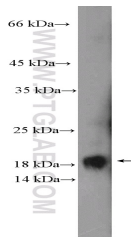
interacting factor A II, CIA II,

FLJ10604, hAsf1, hAsf1b, hCIA

II, Histone chaperone ASF1B



Immunohistochemical of paraffin-embedded human lymphoma using 11011-1-AP(ASF1B antibody) at dilution of 1:100 (under 10x lens)



HeLa cells were subjected to SDS PAGE followed by western blot with 11011-1-AP( ASF1B Antibody) at dilution of 1:300

### Applications

Tested applications:	ELISA, IHC, WB
Species specificity:	Human, Mouse, Rat; other species not tested.
Calculated ASF1B MW:	202aa, 22 kDa
Observed ASF1B MW:	22 kDa
Positive WB detected in	HeLa cells, mouse thymus tissue
Positive IHC detected in	Human lymphoma tissue
Recommended dilution:	WB: 1:200-1:1000 IHC: 1:20-1:200

Application key: WB = Western blotting, IHC = Immunohistochemistry, IF = Immunofluorescence, IP = Immunoprecipitation

### Immunogen information

Immunogen:	Ag1477
GenBank accession number:	BC010014
Gene ID (NCBI):	55723
Full name:	ASF1 anti-silencing function 1 homolog B (S. cerevisiae)

### Product information

Purification method:	Antigen affinity purification
Storage:	PBS with 0.1% sodium azide and 50% glycerol pH 7.3. Store at -20°C.