

RRAS2 Polyclonal Antibody

Catalog number: 12530-1-AP

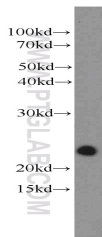
Size: 20 µg/150 µl

Source: Rabbit

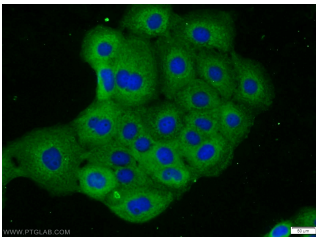
Isotype: IgG

Synonyms:

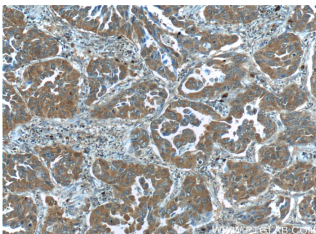
RRAS2; Ras like protein TC21,
Ras related protein R Ras2,
RRAS2, TC21, Teratocarcinoma
oncogene



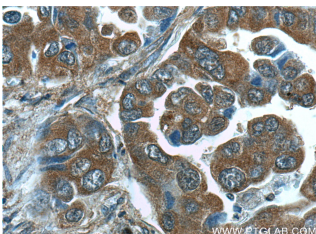
NIH/3T3 cells were subjected to SDS PAGE followed by western blot with 12530-1-AP (RRAS2 antibody) at dilution of 1:800



Immunofluorescent analysis of A431 cells using 12530-1-AP (RRAS2 Antibody) at dilution of 1:25 and Alexa Fluor 488-conjugated AffiniPure Goat Anti-Rabbit IgG(H+L)



Immunohistochemistry of paraffin-embedded human lung cancer tissue slide using 12530-1-AP (RRAS2 Antibody) at dilution of 1:50 (under 10x lens)



Applications

Tested applications:	ELISA, WB, IHC, IF, IP
Cited applications:	WB
Species specificity:	Human, Mouse, Rat; other species not tested.
Cited species:	Monkey
Calculated RRAS2 MW:	204aa, 23 kDa
Observed RRAS2 MW:	23 kDa
Positive WB detected in	NIH/3T3 cells, mouse pancreas tissue
Positive IP detected in	NIH/3T3 cells
Positive IHC detected in	Human lung cancer tissue, human heart tissue
Positive IF detected in	A431 cells
Recommended dilution:	WB: 1:200-1:2000
	IP: 1:200-1:2000
	IHC: 1:20-1:200
	IF: 1:10-1:100

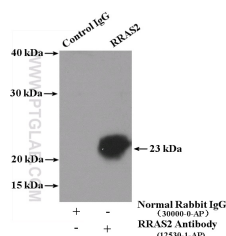
Application key: WB = Western blotting, IHC = Immunohistochemistry, IF = Immunofluorescence, IP = Immunoprecipitation

Immunogen information

Immunogen:	Ag3226
GenBank accession number:	BC013106
Gene ID (NCBI):	22800
Full name:	Related RAS viral (r-ras) oncogene homolog 2

Product information

Purification method:	Antigen affinity purification
Storage:	PBS with 0.1% sodium azide and 50% glycerol pH 7.3. Store at -20°C.



Immunohistochemistry of
paraffin-embedded human
lung cancer tissue slide using
12530-1-AP(RRAS2
Antibody) at dilution of 1:50
(under 40x lens)

IP Result of anti-RRAS2
(IP:12530-1-AP, 4ug;
Detection:12530-1-AP 1:800)
with NIH/3T3 cells lysate
4000ug.