

KIF12 Polyclonal Antibody

Catalog number: 12035-1-AP

Size: 49 µg/150 µl

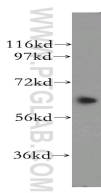
Source: Rabbit

Isotype: IgG

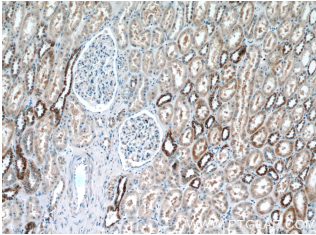
Synonyms:

KIF12; KIF12, kinesin family member 12, Kinesin like protein

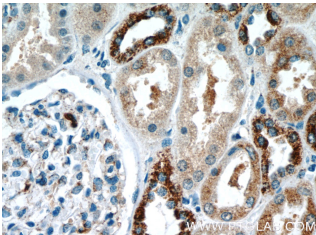
KIF12, RP11 56P10.3



Y79 cells were subjected to SDS PAGE followed by western blot with 12035-1-AP (KIF12 antibody) at dilution of 1:400



Immunohistochemistry of paraffin-embedded human kidney tissue slide using 12035-1-AP (KIF12 Antibody) at dilution of 1:50 (under 10x lens)



Immunohistochemistry of paraffin-embedded human kidney tissue slide using 12035-1-AP (KIF12 Antibody) at dilution of 1:50 (under 40x lens)

Applications

Tested applications:	ELISA, WB, IHC
Cited applications:	IHC, WB
Species specificity:	Human, Mouse, Rat; other species not tested.
Cited species:	Human, mouse
Calculated KIF12 MW:	646aa, 71 kDa
Observed KIF12 MW:	65kd
Positive WB detected in	Y79 cells
Positive IHC detected in	Human kidney tissue, human pancreas cancer tissue, human renal cell carcinoma tissue
Recommended dilution:	WB: 1:500-1:5000 IHC: 1:20-1:200

Application key: WB = Western blotting, IHC = Immunohistochemistry, IF = Immunofluorescence, IP = Immunoprecipitation

Immunogen information

Immunogen:	Ag2707
GenBank accession number:	BC010626
Gene ID (NCBI):	113220
Full name:	Kinesin family member 12

Product information

Purification method:	Antigen affinity purification
Storage:	PBS with 0.1% sodium azide and 50% glycerol pH 7.3. Store at -20°C.